

ELIZABETH KLEIN

INTERIOR DESIGNER

PROJECTS

CONTENTS



01

RUCKRIEGEL & RAND
RESIDENCE



02

OUR LITTLE SECRET



03

CASPIAN'S
ROCK & ROE



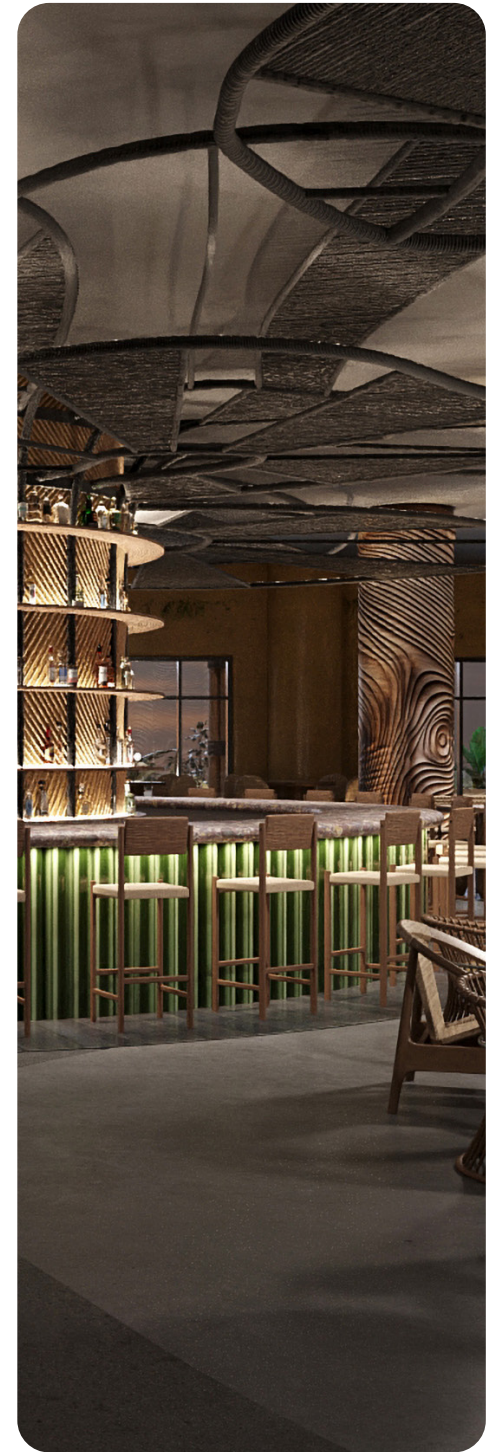
04

MADISON
MODERN SOCIAL



05

HEARTHSTONE
KITCHEN & CELLAR



06

MESA DIOSA

RUCKRIEGEL & RAND RESIDENCE

RESIDENTIAL - PRIVATE CLIENT
ST.PETERSBURG, FLORIDA
2025



CONCEPT

MOOD BOARD

Located in the tallest building in St. Petersburg, Florida, this private penthouse residence was designed as a luxurious, masculine retreat that reflects both the strength of its architecture and the refined taste of its owners. From the primary suite and expansive living areas to the media room, office, and guest accommodations, each space is designed with intention, balancing function, comfort, and understated elegance.

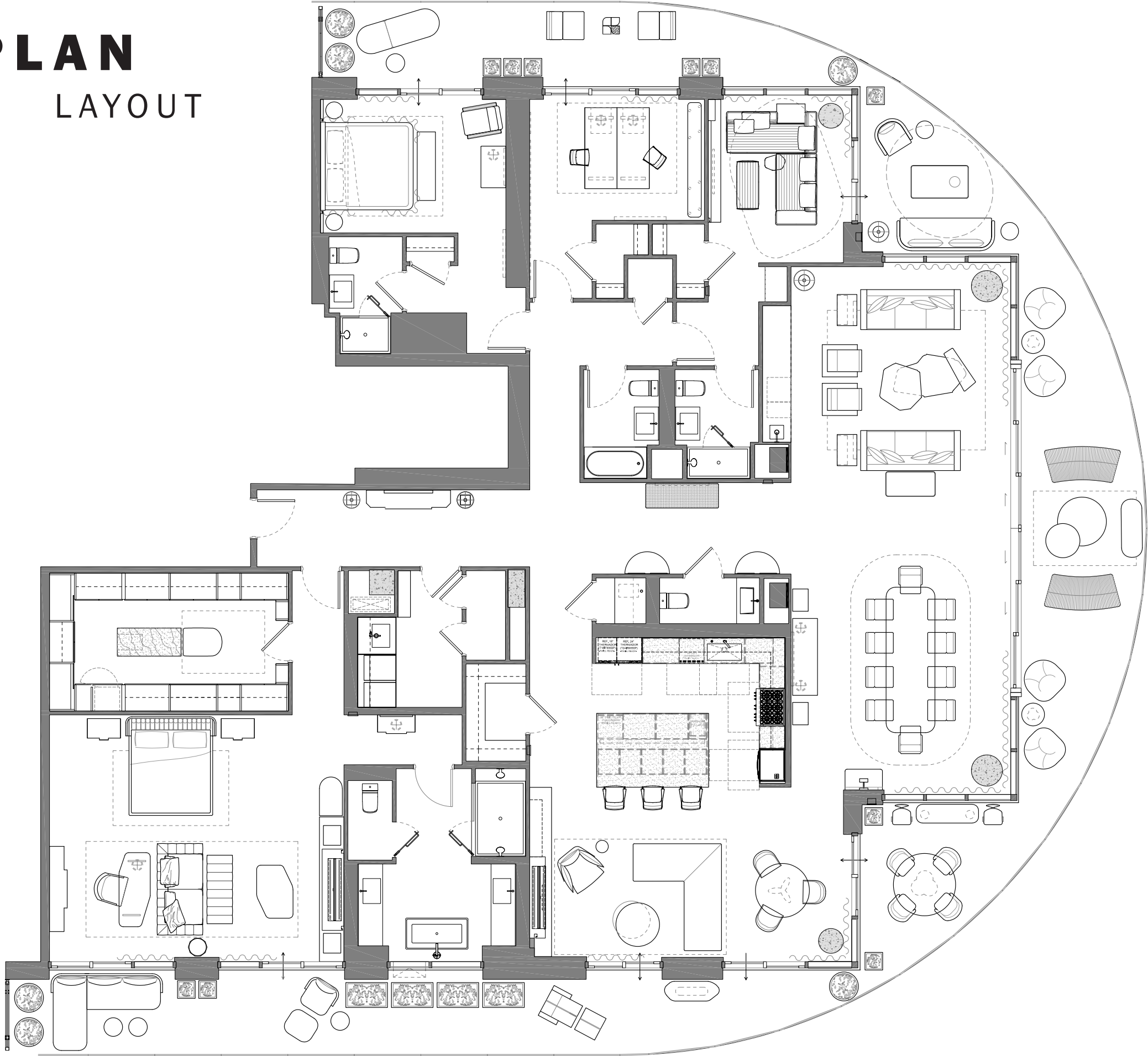
With a palette anchored in rich, layered neutrals and tactile materials, the interiors strike a balance between strength and serenity. Polished nickel finishes lend a subtle luster throughout, reflecting natural light and reinforcing the home's tailored aesthetic. Custom millwork, sculptural furnishings, and curated art pieces elevate each space with purpose and restraint.

From the formal living and dining rooms to the media room, office, and keeping room, every space is thoughtfully defined yet seamlessly connected, offering both functionality and flow. The expansive wraparound terrace blurs the line between indoors and out while maximizing the residence's unique vantage point over the Gulf and city skyline.



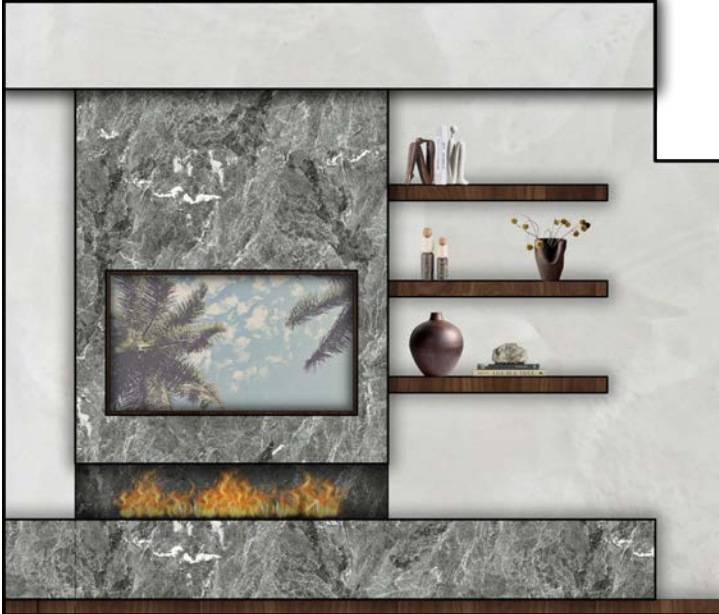
FLOOR PLAN

LAYOUT



RENDERINGS

ELEVATIONS



KEEPING ROOM



LAUNDRY ROOM



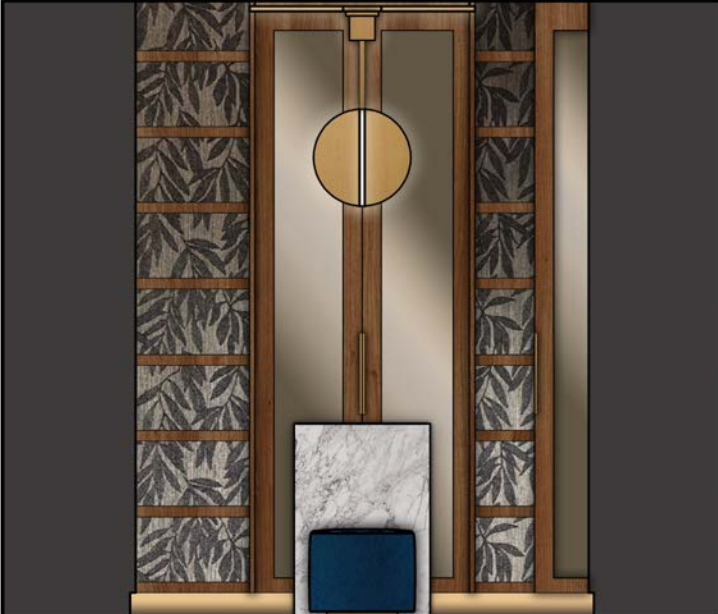
MEDIA ROOM



DRY BAR



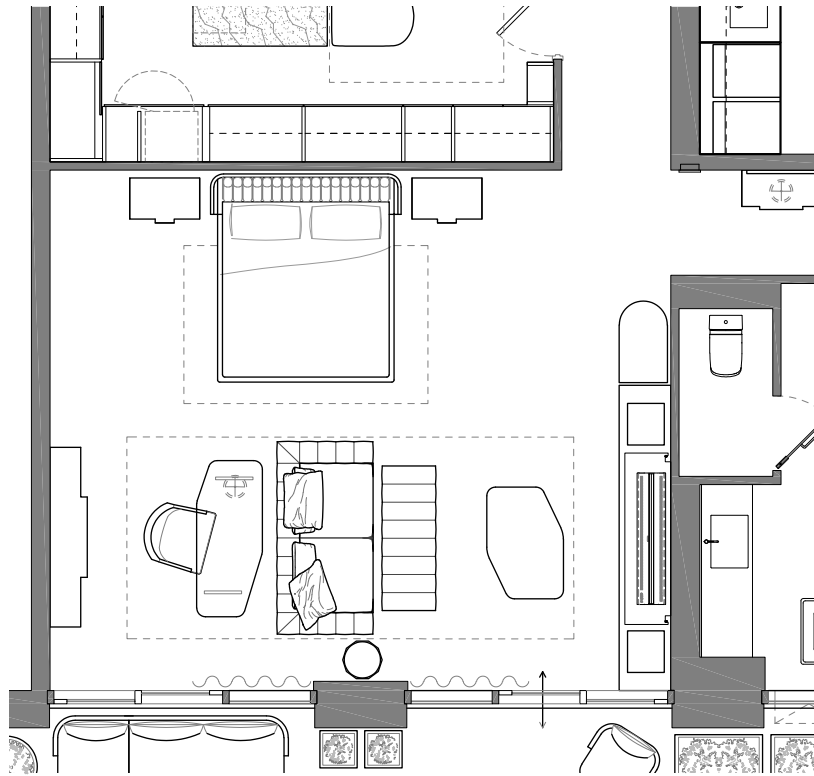
WET BAR



PRIMARY CLOSET

PRIMARY BEDROOM FURNITURE

SELECTIONS

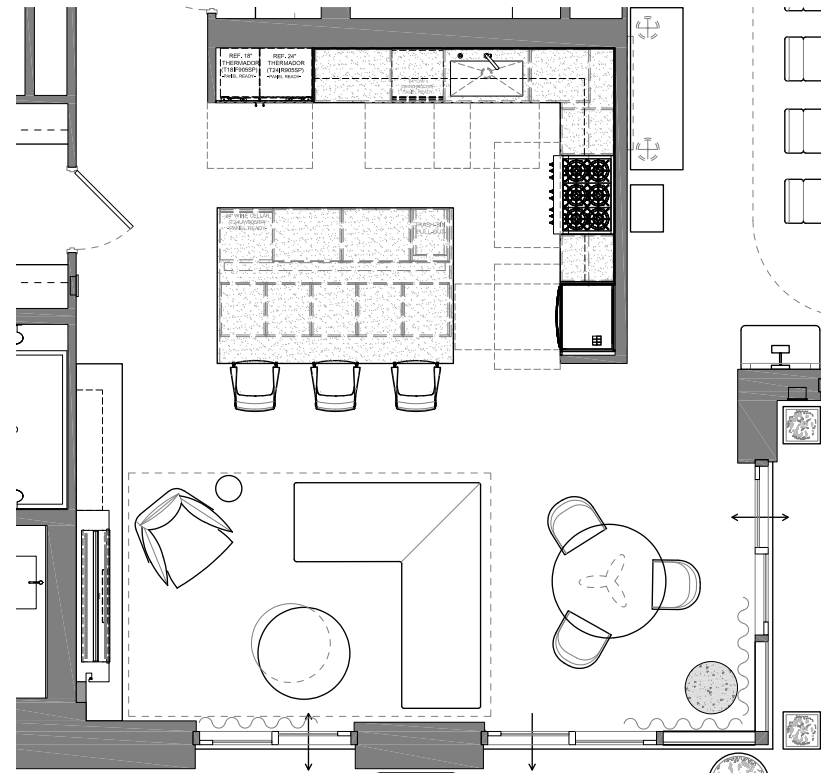


ELIZABETH KLEIN

RUCKRIEGEL & RAND RESIDENCE

KEEPING ROOM FURNITURE

SELECTIONS

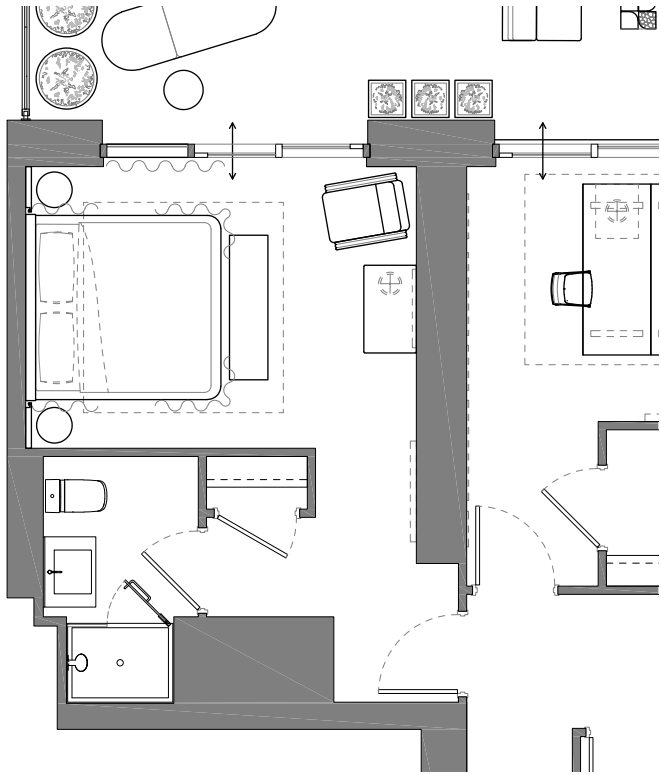


ELIZABETH KLEIN

RUCKRIEGEL & RAND RESIDENCE

GUEST BEDROOM FURNITURE

SELECTIONS



ELIZABETH KLEIN

RUCKRIEGEL & RAND RESIDENCE

OUR LITTLE SECRET

HOSPITALITY - RESTAURANT
OLD BRIDGE, NEW JERSEY
2025



CONCEPT

MOOD BOARD

Our Little Secret is an intimate extension of the Madison Modern Social experience. It is a refined hideaway that fuses old-world elegance with contemporary allure. Designed as a boutique restaurant that transforms into a late-night destination, the space invites guests to step into a world of mystery, sophistication, and connection. Every corner is crafted to feel exclusive yet welcoming, where the evening unfolds behind closed doors and every detail tells a story.

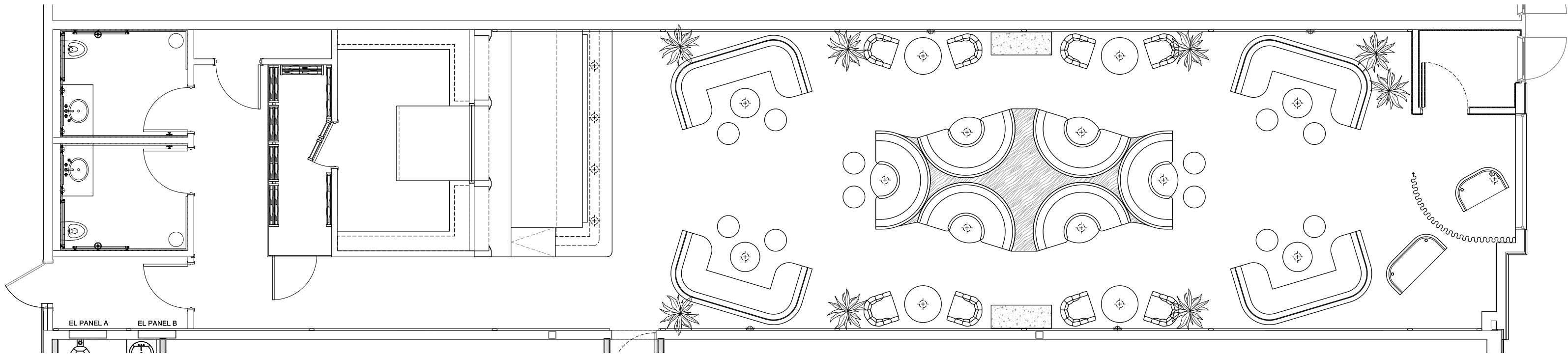
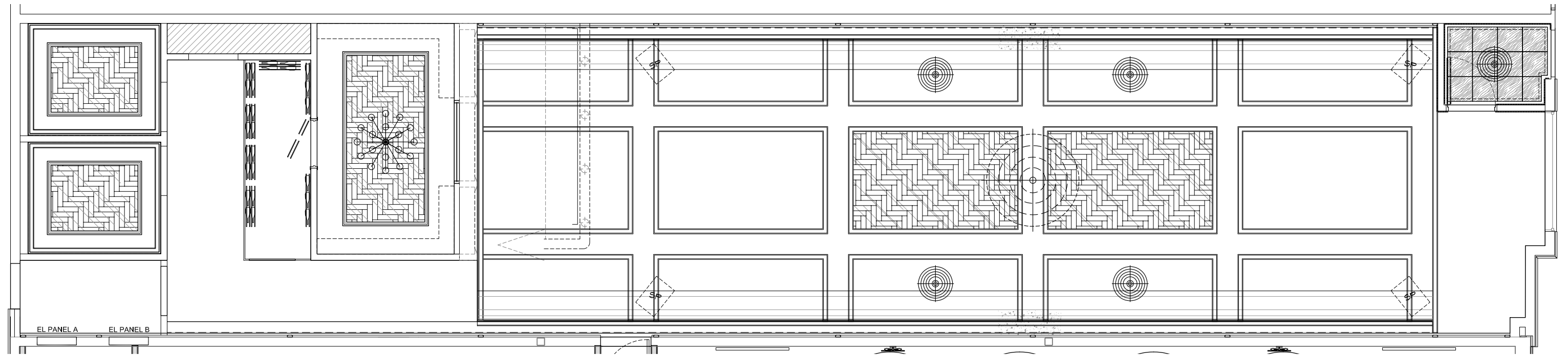
Warm walnut wall paneling and rich brown plaster set the tone for a space steeped in classic charm, while sleek stone surfaces and smoked glass chandeliers introduce a modern edge. The interplay of soft, ambient lighting and dark, tactile materials creates a sense of intimacy and intrigue, encouraging guests to linger as day turns to night.

Balancing the timeless with the unexpected, Our Little Secret captures the essence of a modern speakeasy with elegance, mood, and magnetism. It's a place where refined design meets effortless seduction, transforming each visit into a shared secret worth keeping.



FLOOR PLAN

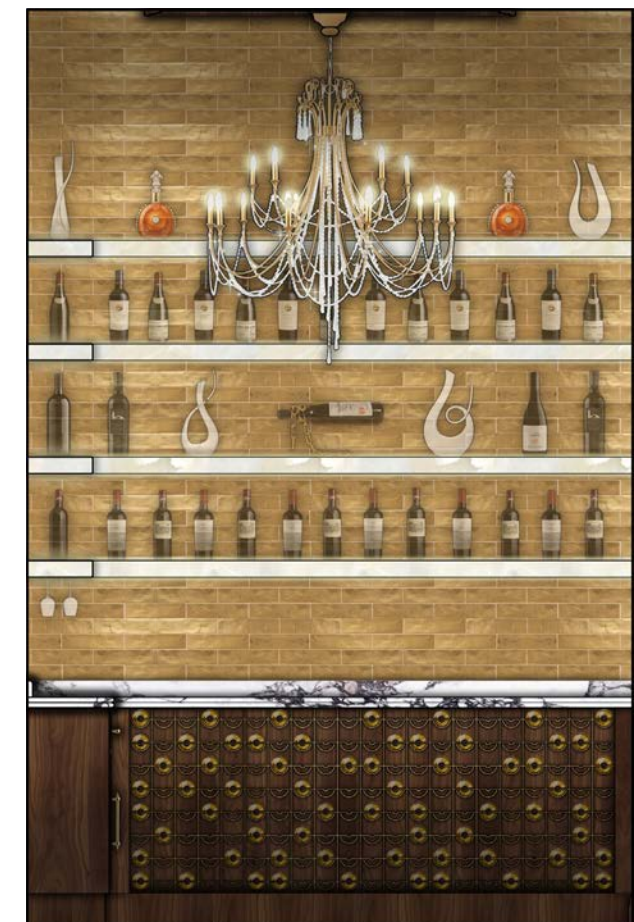
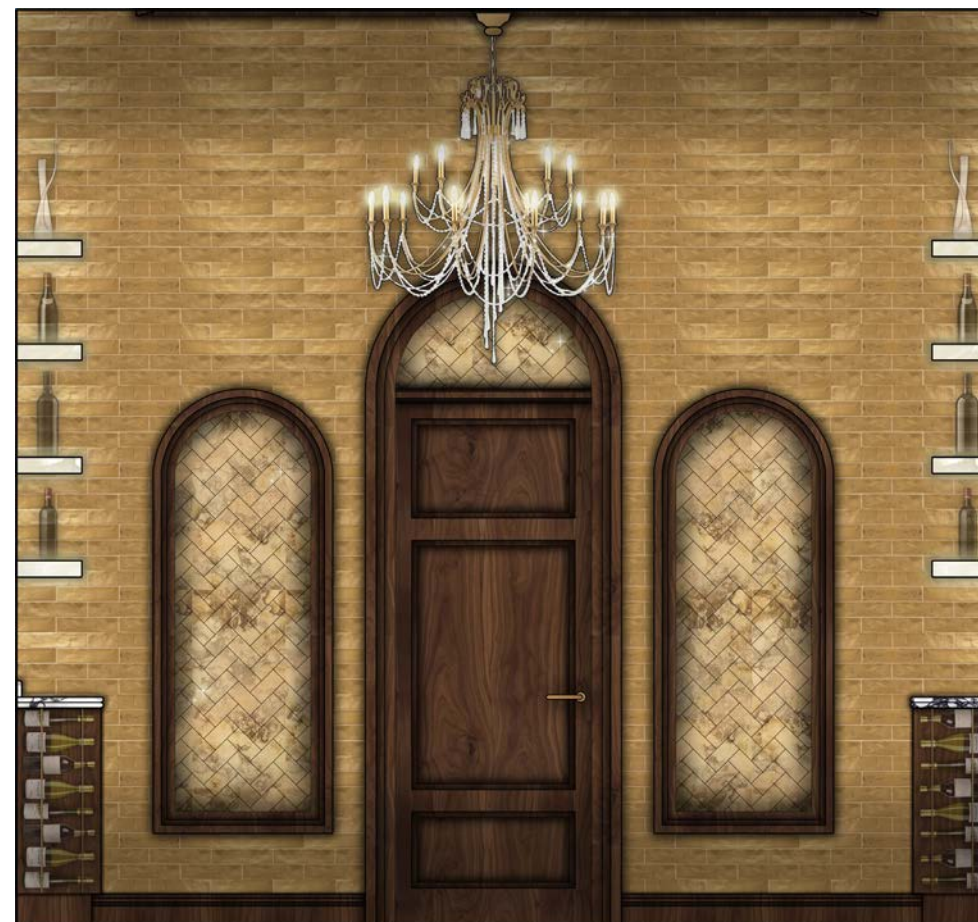
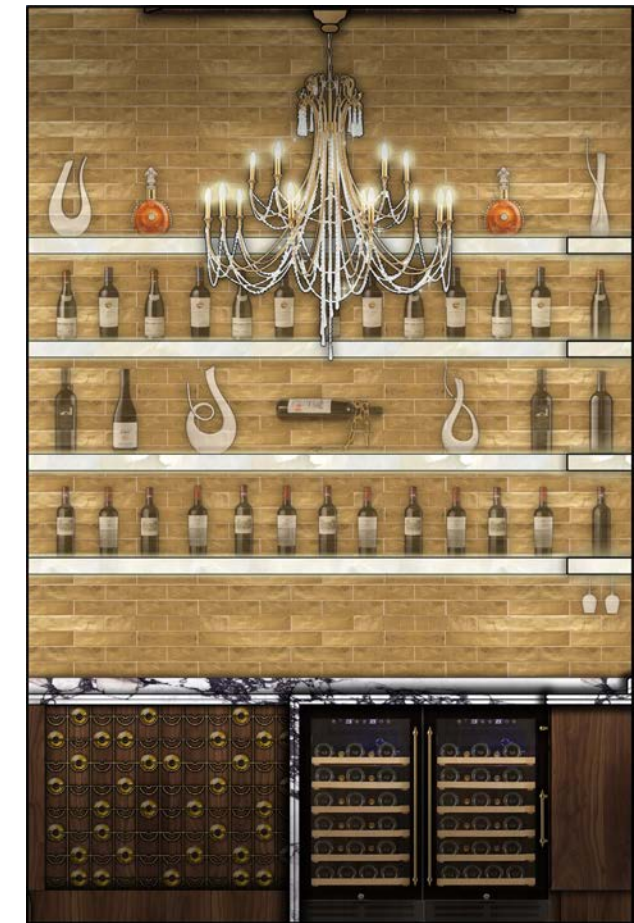
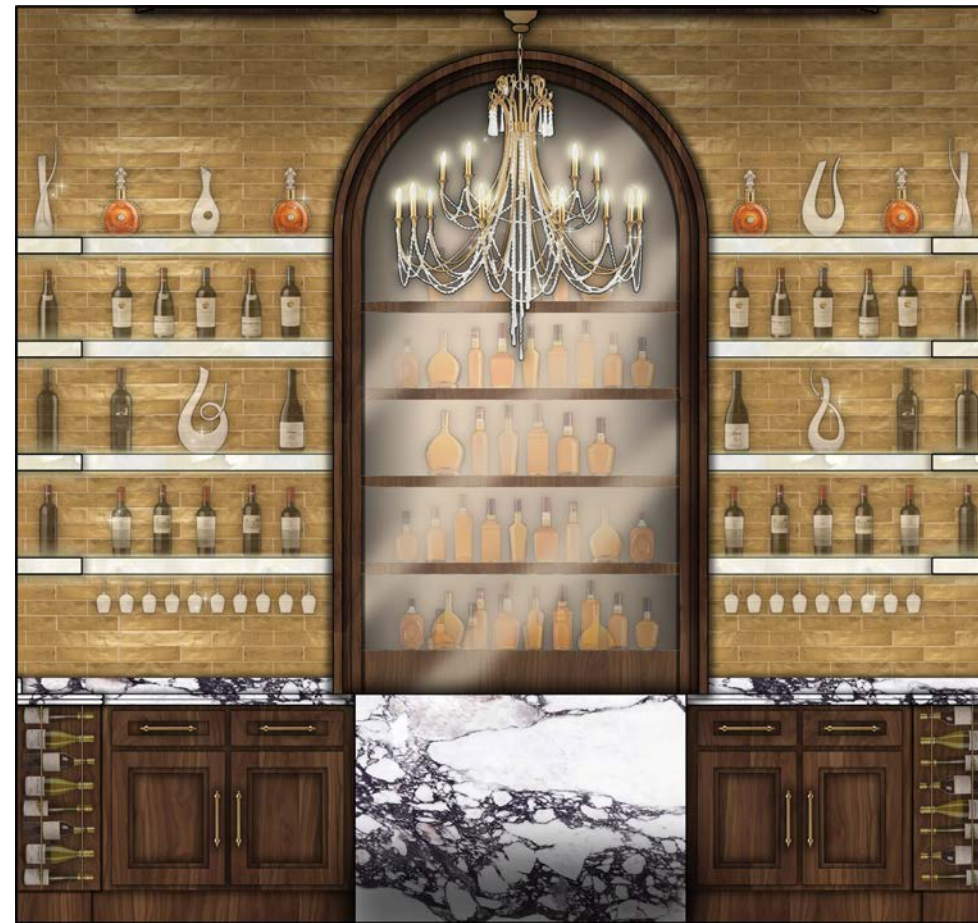
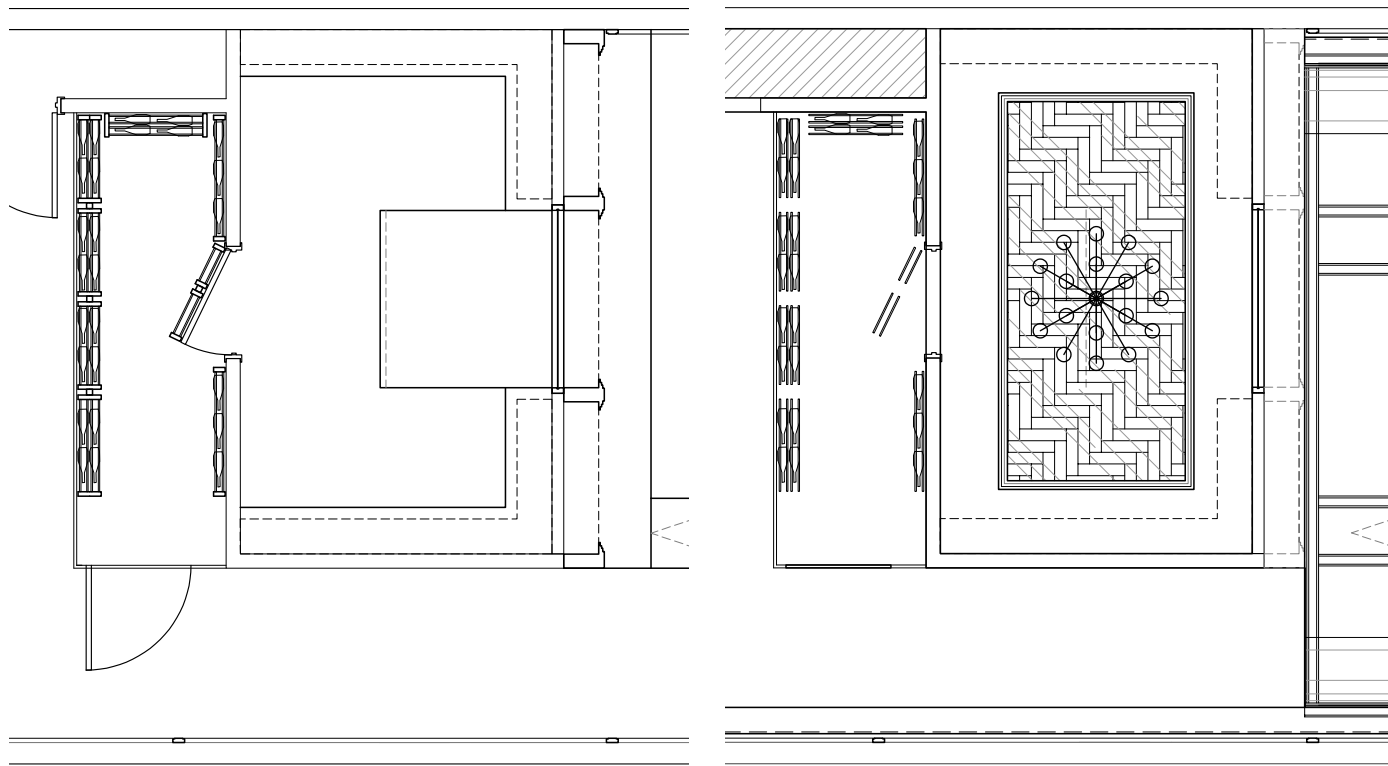
LAYOUT



RENDERINGS

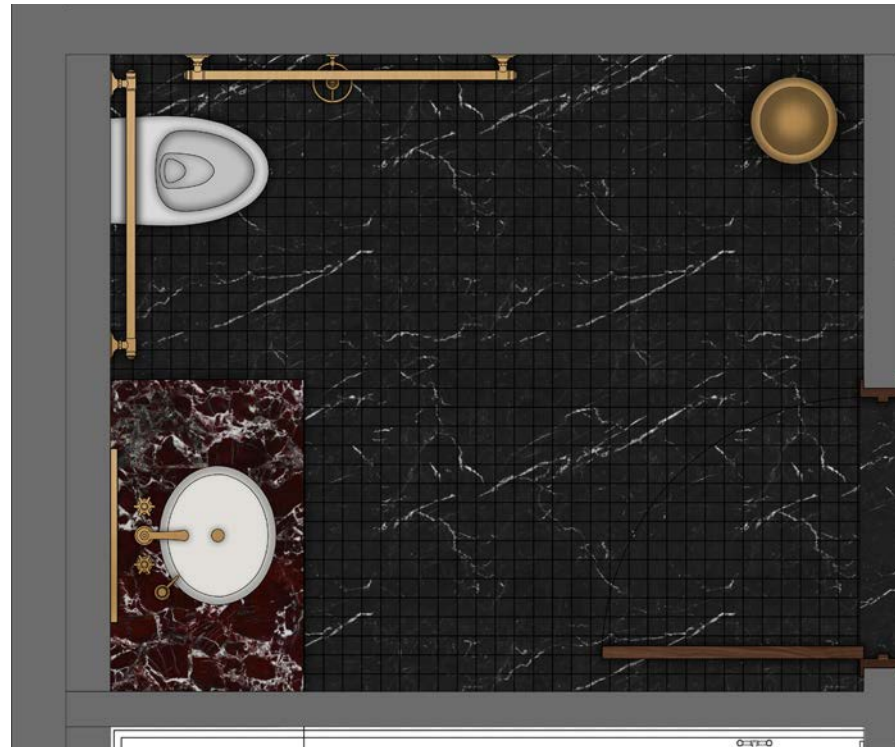
THE GOLD ROOM

Hidden behind a discreet entry, the wine room is the little secret within Our Little Secret. Wrapped in radiant gold brick and framed by rich walnut millwork, the space glows with quiet opulence. Illuminated displays showcase an exceptional wine collection, each bottle presented as a work of art. The warm metallic tones and intimate scale create a mood of indulgent secrecy. The Gold Room is a place where luxury is not flaunted, but quietly savored.



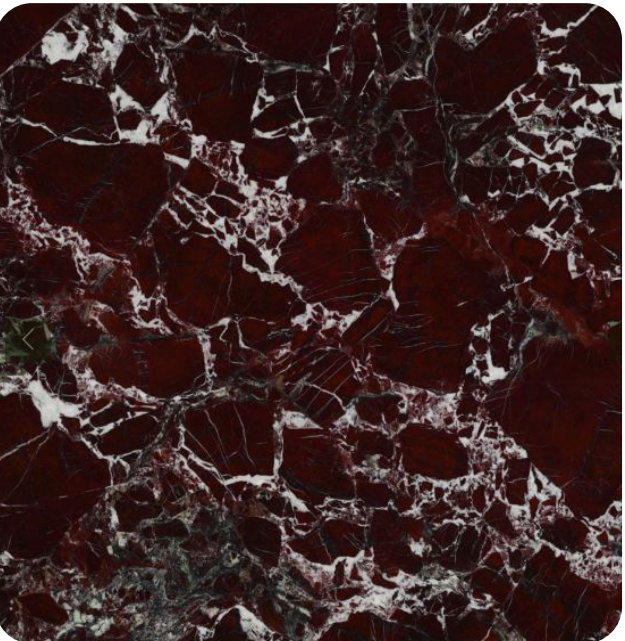
RENDERINGS

RESTROOMS



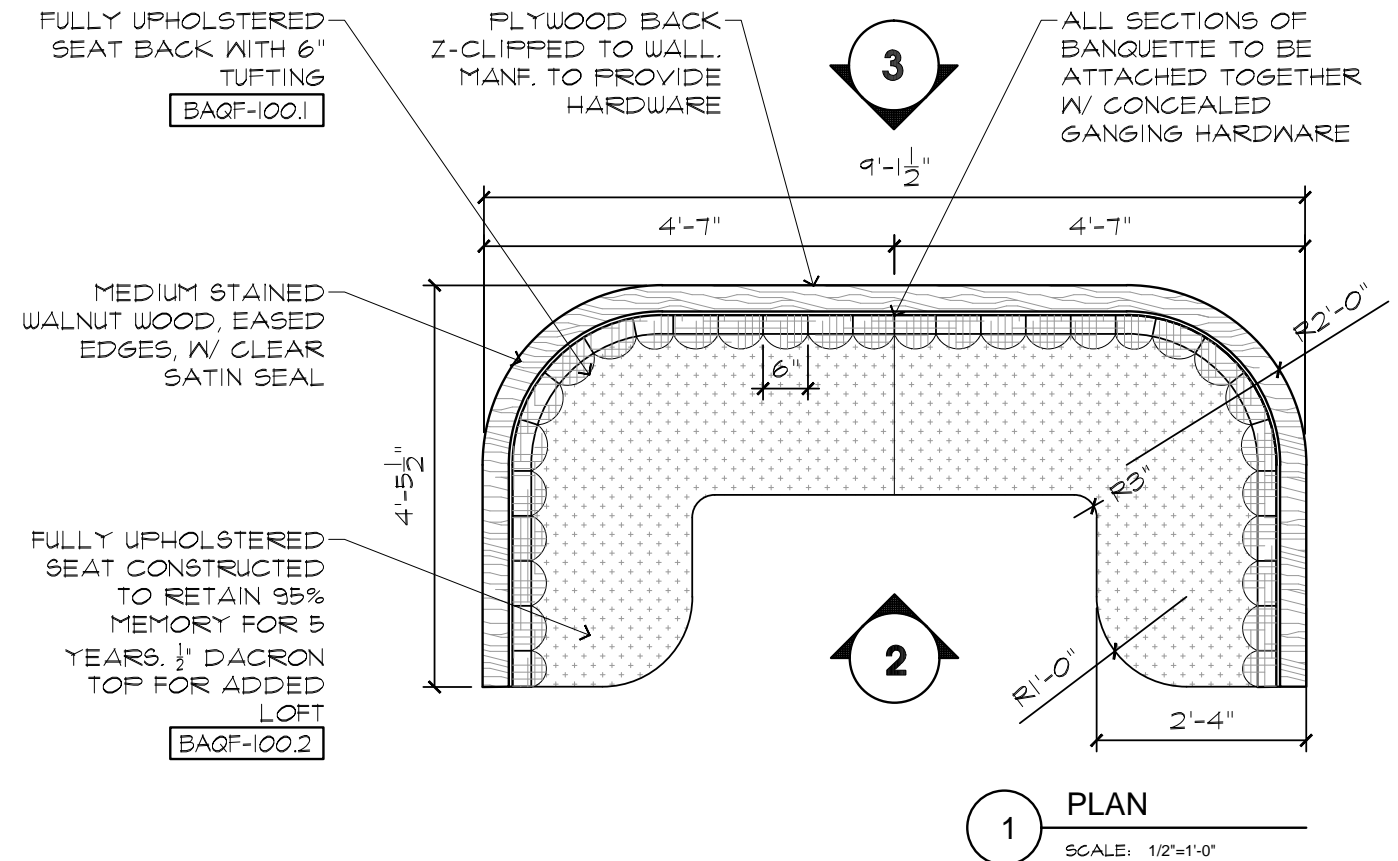
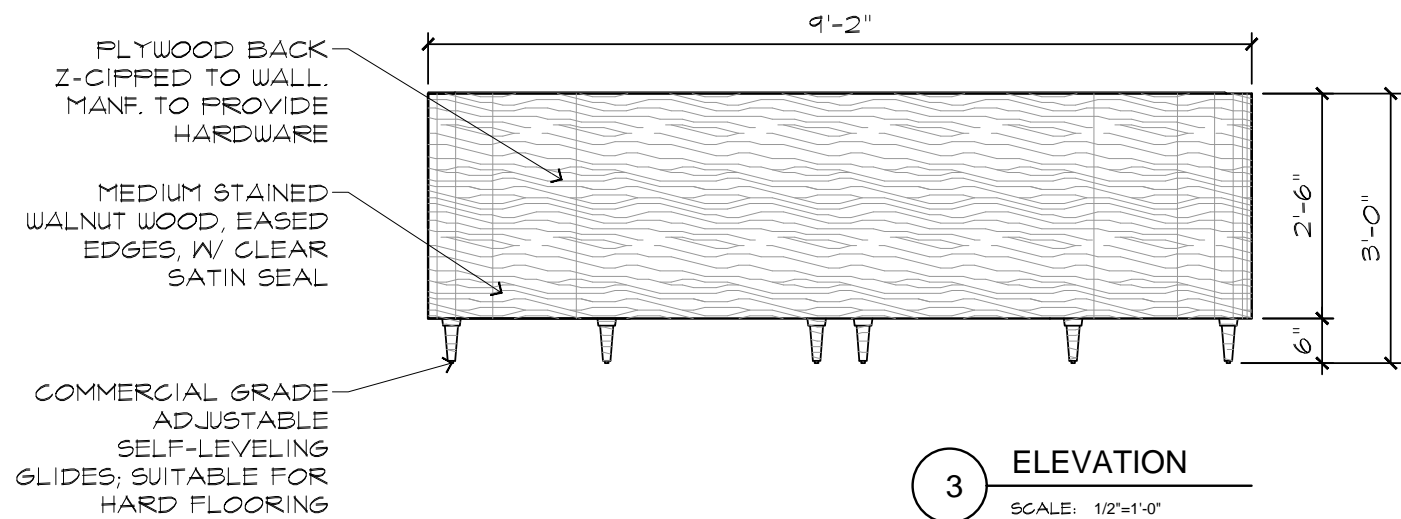
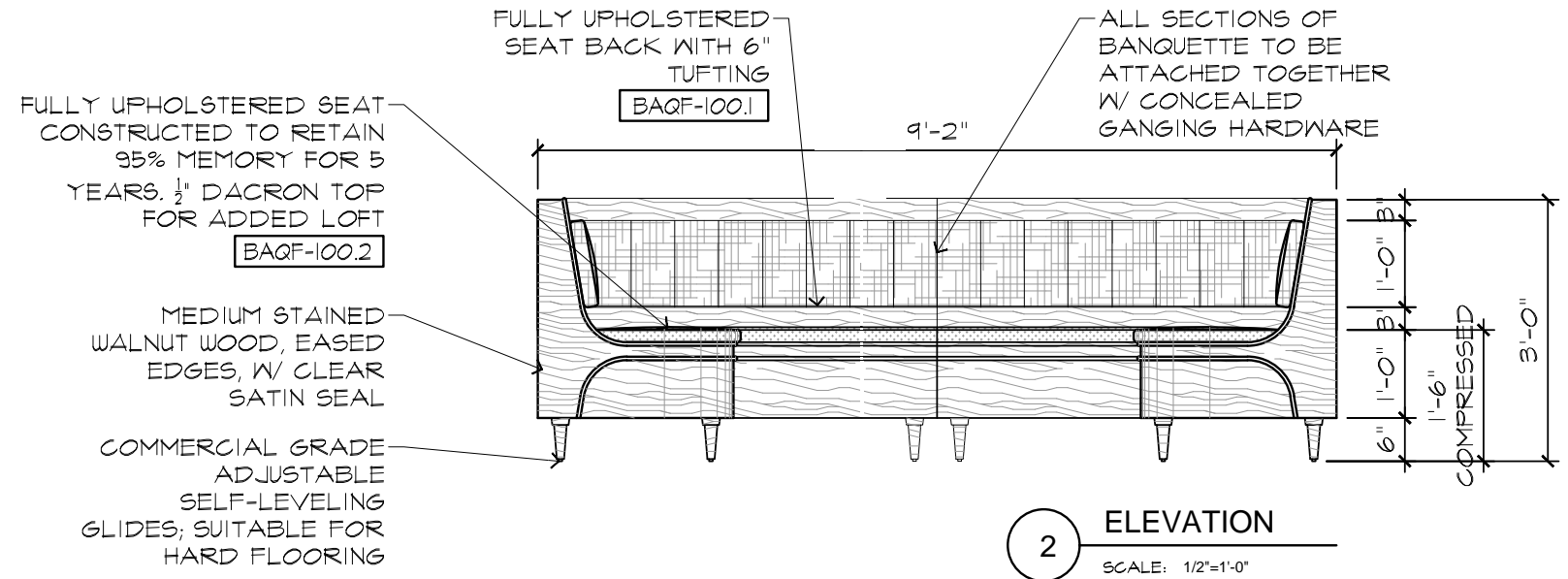
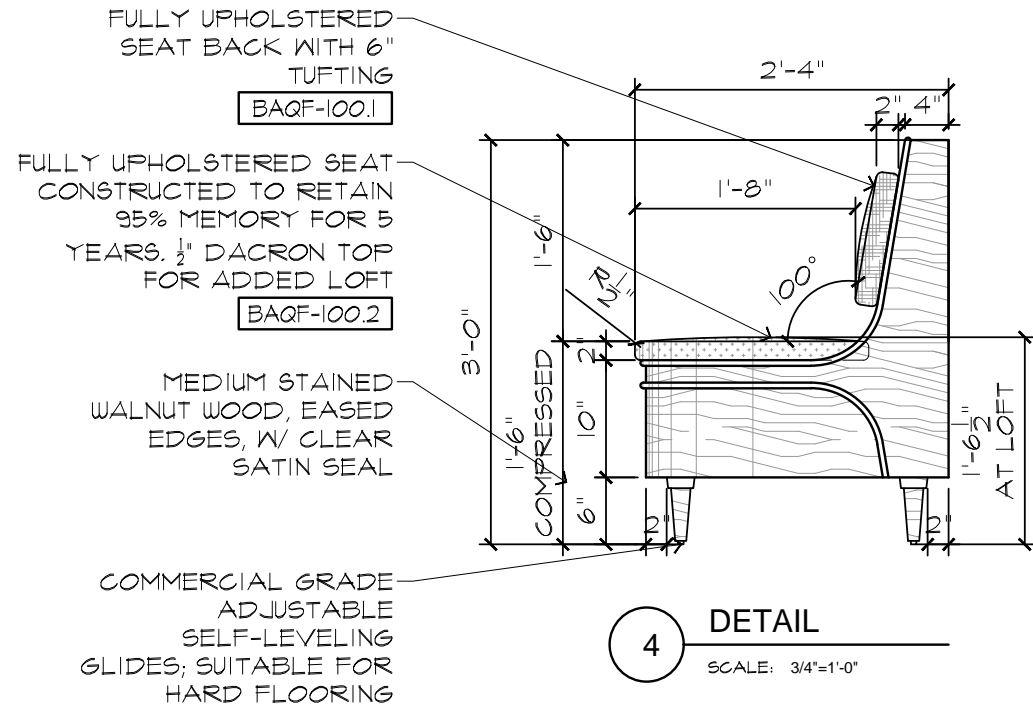
MATERIALS

ARCHITECTURAL FINISHES



CUSTOM FURNITURE

BANQUETTE



CASPIAN'S ROCK & ROE

HOSPITALITY - SPEAKEASY LOUNGE & CAVIAR BAR

LAS VEGAS, NEVADA

2024



CONCEPT

MOOD BOARD

Caspian's is a luxurious caviar and champagne bar designed to bring refined elegance and modern glamour to Caesar's Palace. Guests are welcomed by a radiant bar featuring moss-green antique mirror panels and silver-leaf columns. A striking marble floor in shades of gray, white, and black contrasts with warm burlwood and brass wall panels, setting the tone for an indulgent and sophisticated experience.

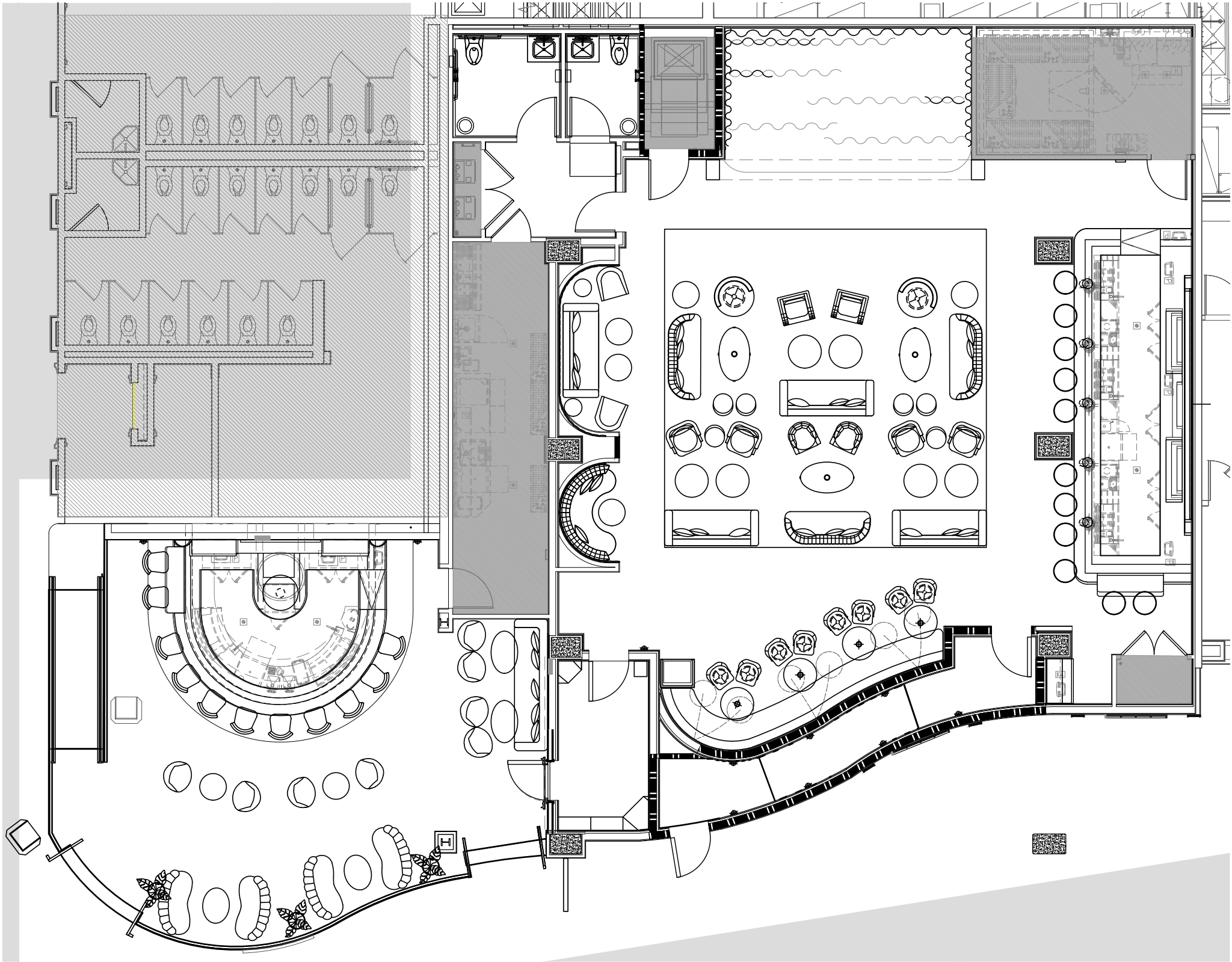
Hidden behind one of the burlwood panels lies The Siren's Palace, an exclusive music lounge for those in the know. The space centers on a stage framed in gold and draped in deep blue velvet, creating a dramatic backdrop for live performances. A backlit mural of a siren and her underwater world illuminates with the rhythm of the music, immersing guests in a layered visual and auditory experience.

The lounge features a mix of rich materials and textures, including leather wingback chairs and silk sofas in aubergine and ochre hues. Above, a grand chandelier of cut crystal and brass casts a warm, dynamic glow that enhances the atmosphere. Together, Caspian's and The Siren's Palace create an intimate escape, blending opulence, artistry, and intrigue in the heart of Las Vegas.



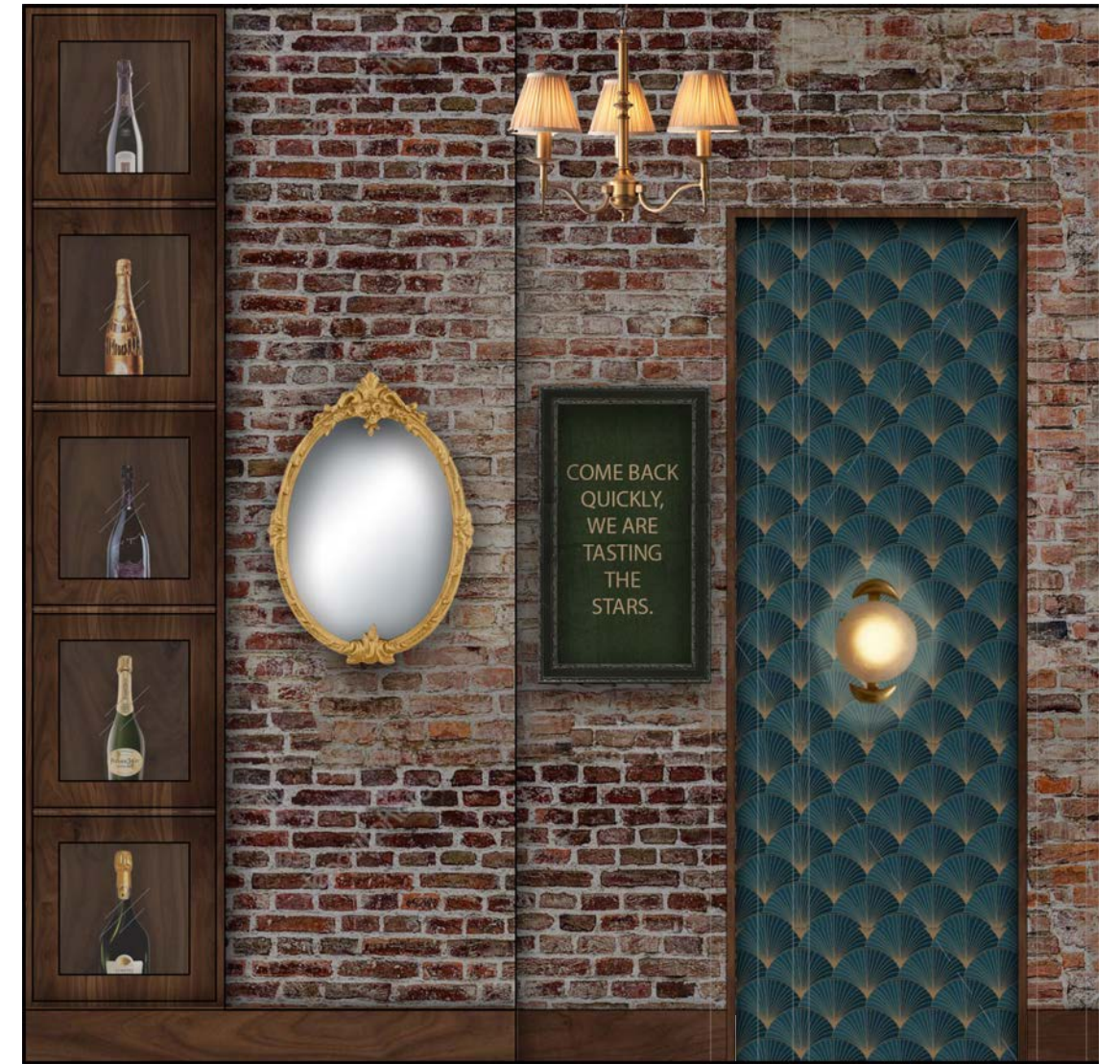
FLOOR PLAN

LAYOUT



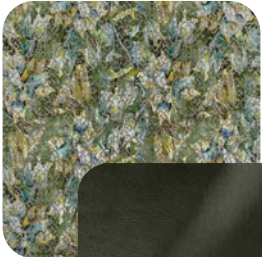
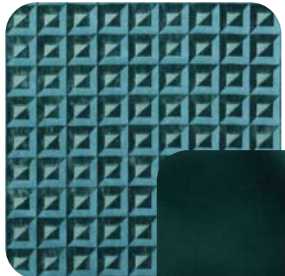
RENDERINGS

SPEAKEASY ENTRY



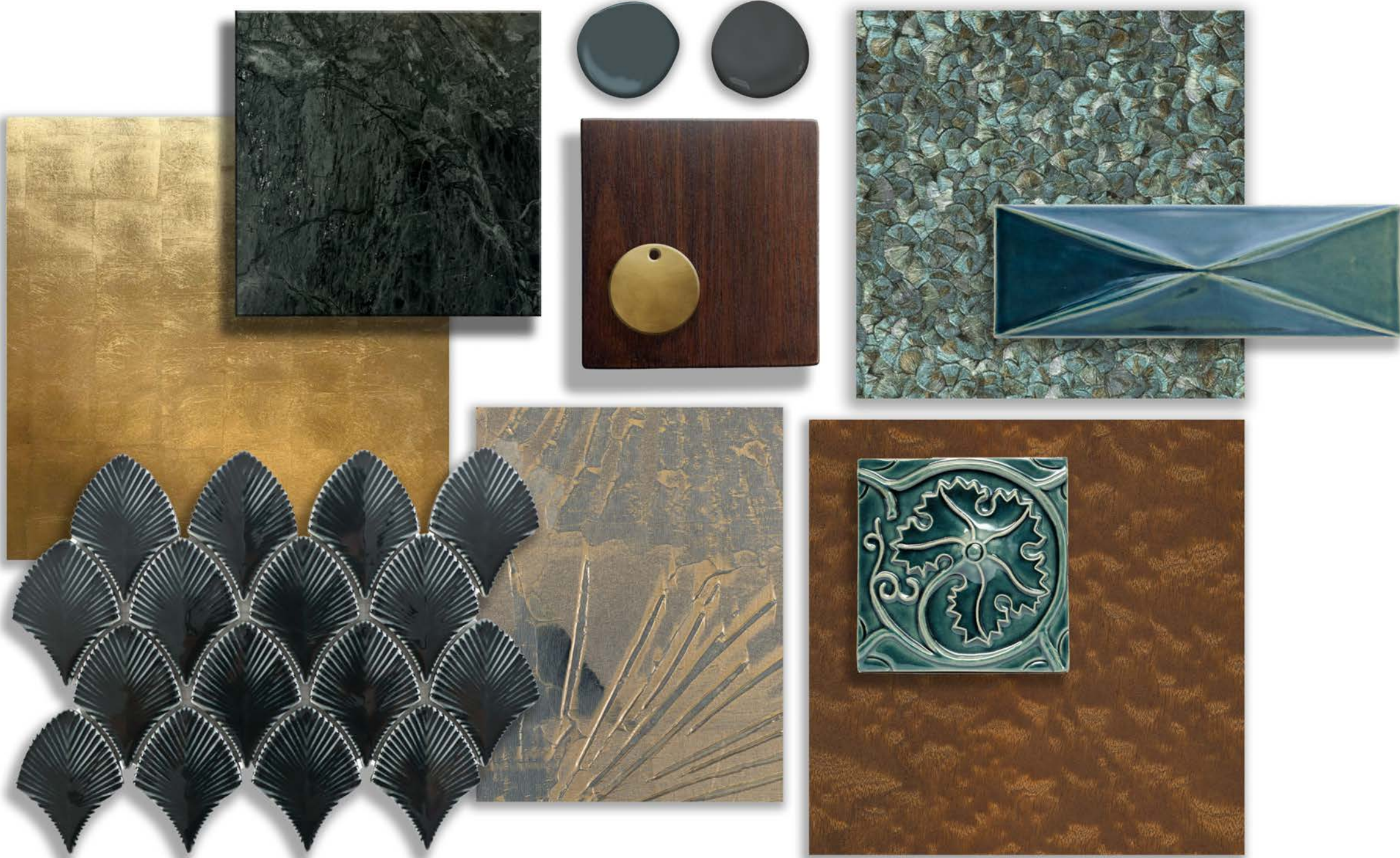
FURNITURE

SELECTIONS

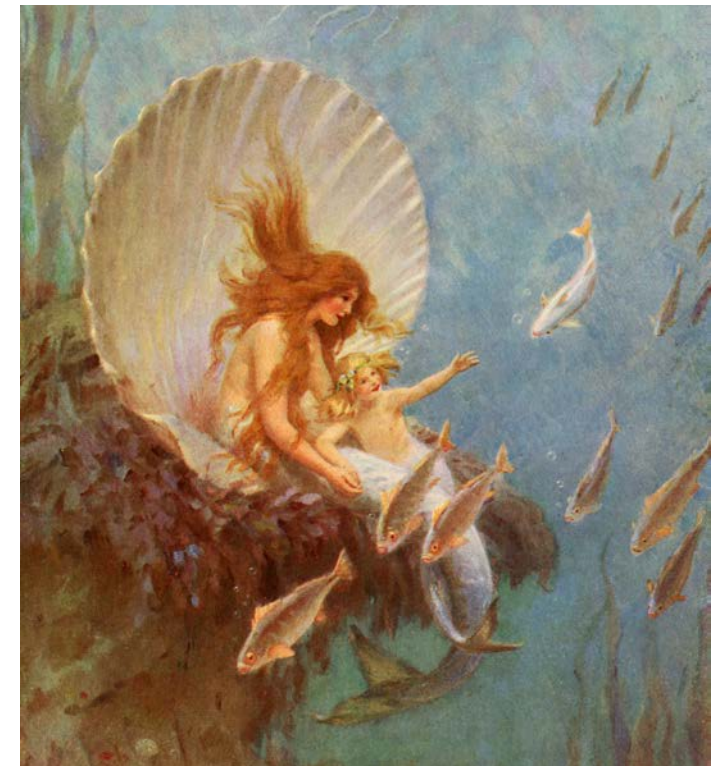
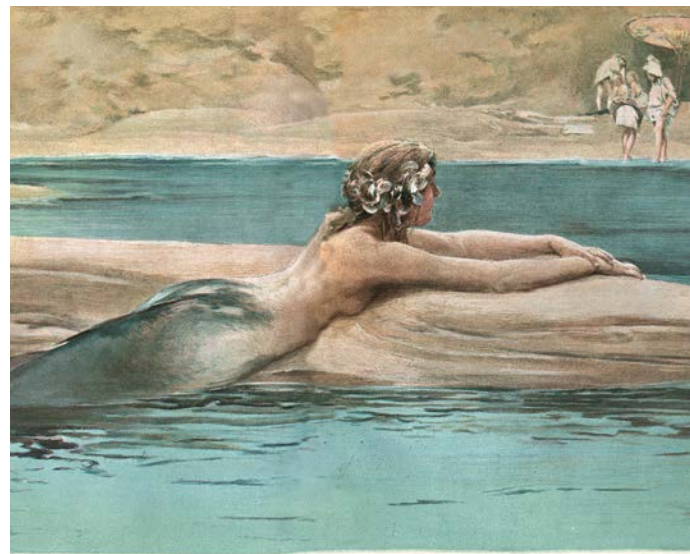
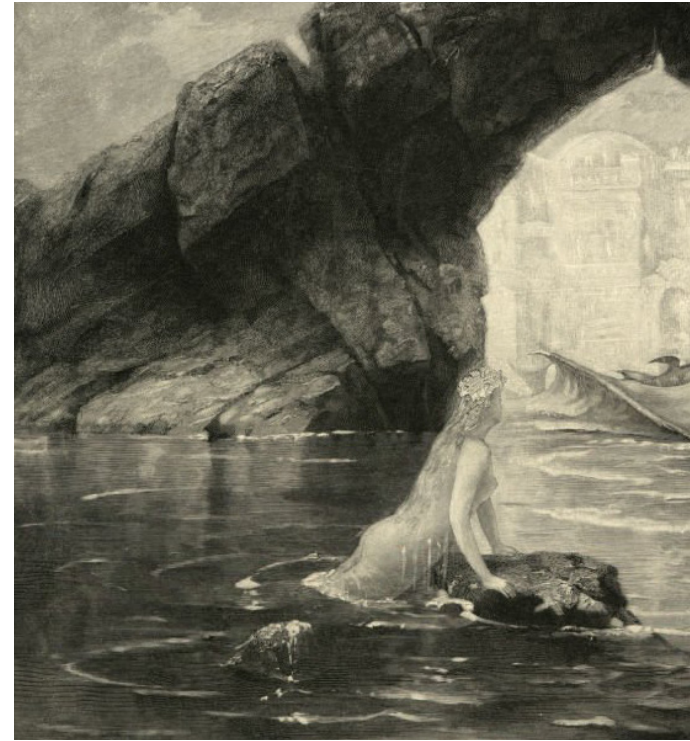
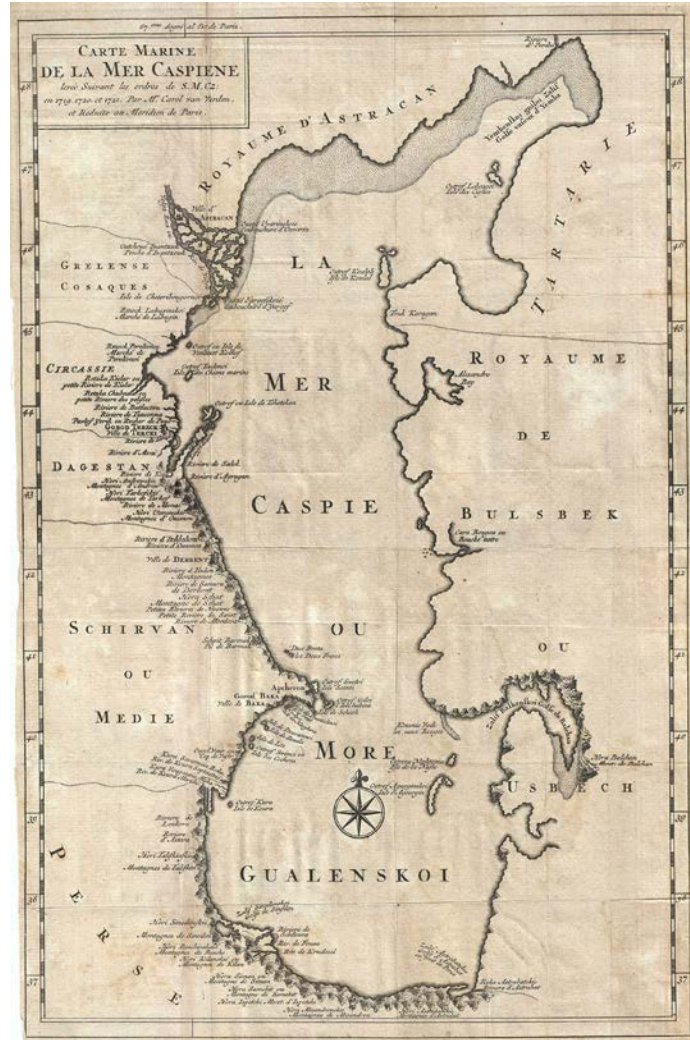


MATERIALS

ARCHITECTURAL FINISHES



ARTWORK SELECTIONS



ELIZABETH KLEIN

CASPIAN'S ROCK & ROE

MADISON MODERN SOCIAL

HOSPITALITY - RESTAURANT
OLD BRIDGE, NEW JERSEY
2025



CONCEPT

MOOD BOARD

Madison Modern Social is a destination dining experience that blurs the line between restaurant and nightlife lounge. Designed to transition seamlessly from a sophisticated dining environment to a vibrant social scene, the space invites guests to gather, dine, and celebrate in an atmosphere that evolves as the night unfolds.

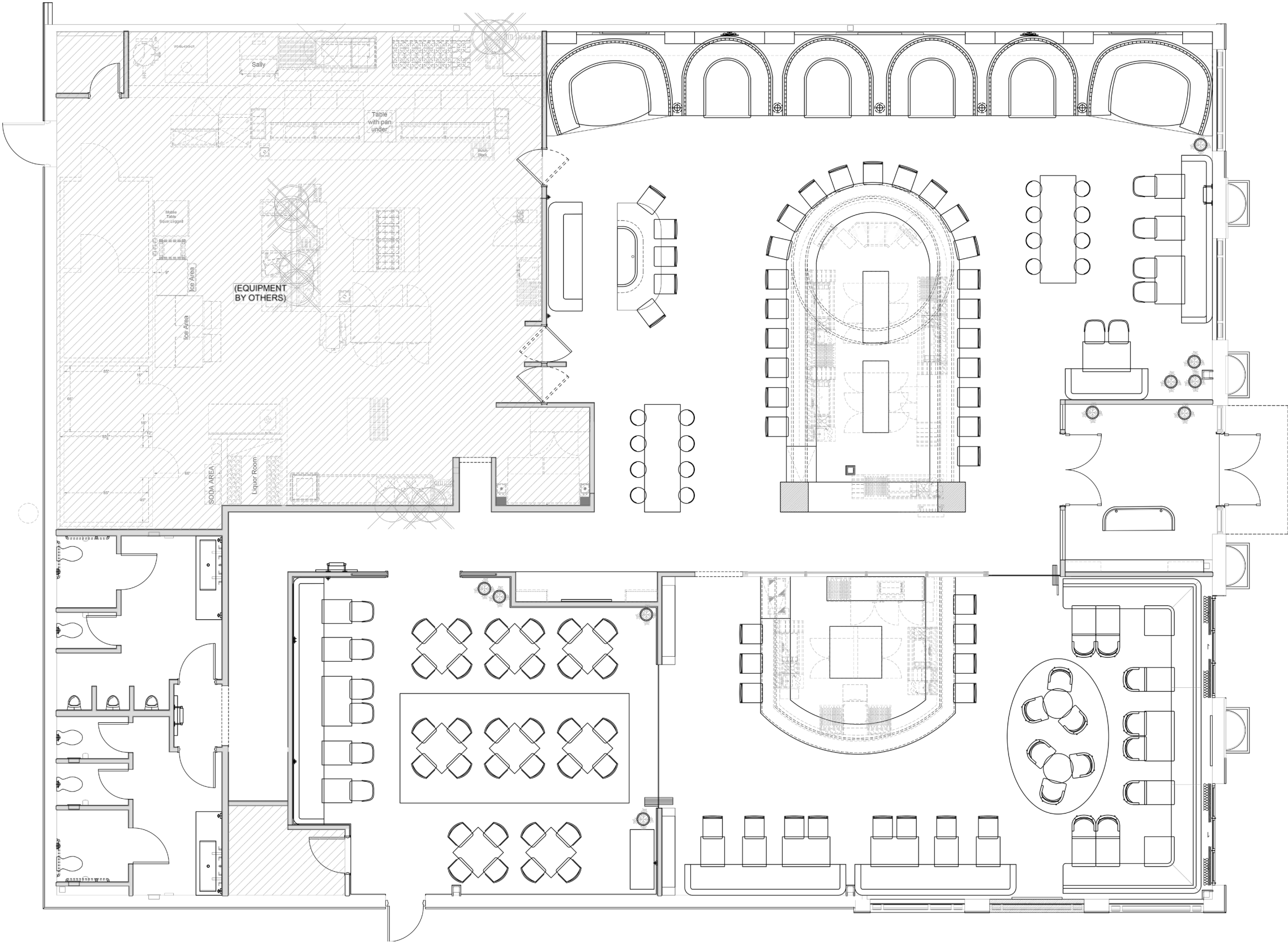
The design centers around connection and energy. A striking oval bar anchors the main dining room, surrounded by forest green tufted banquettes, warm wood finishes, and polished metal accents that reflect the pulse of the evening. A radial black-and-white tile floor and glowing bottle display create a focal point that draws guests into the experience.

In the adjoining lounge, a more intimate setting offers plush seating, a mid-century fireplace, and a rich palette of jewel tones that evoke comfort and style. Together, these spaces create a cohesive environment that embodies modern sophistication, transforming Madison Modern Social into a dynamic gathering place where guests can dine, drink, and dance the night away.



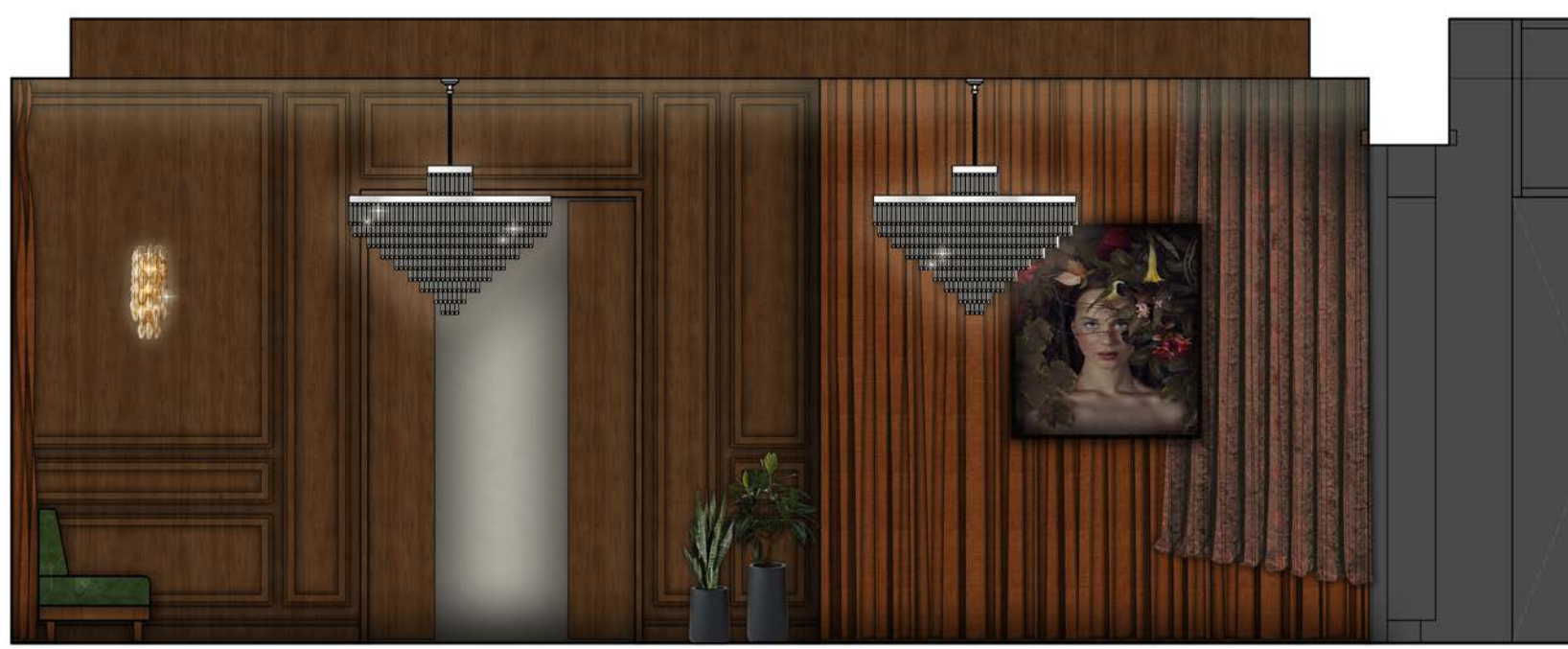
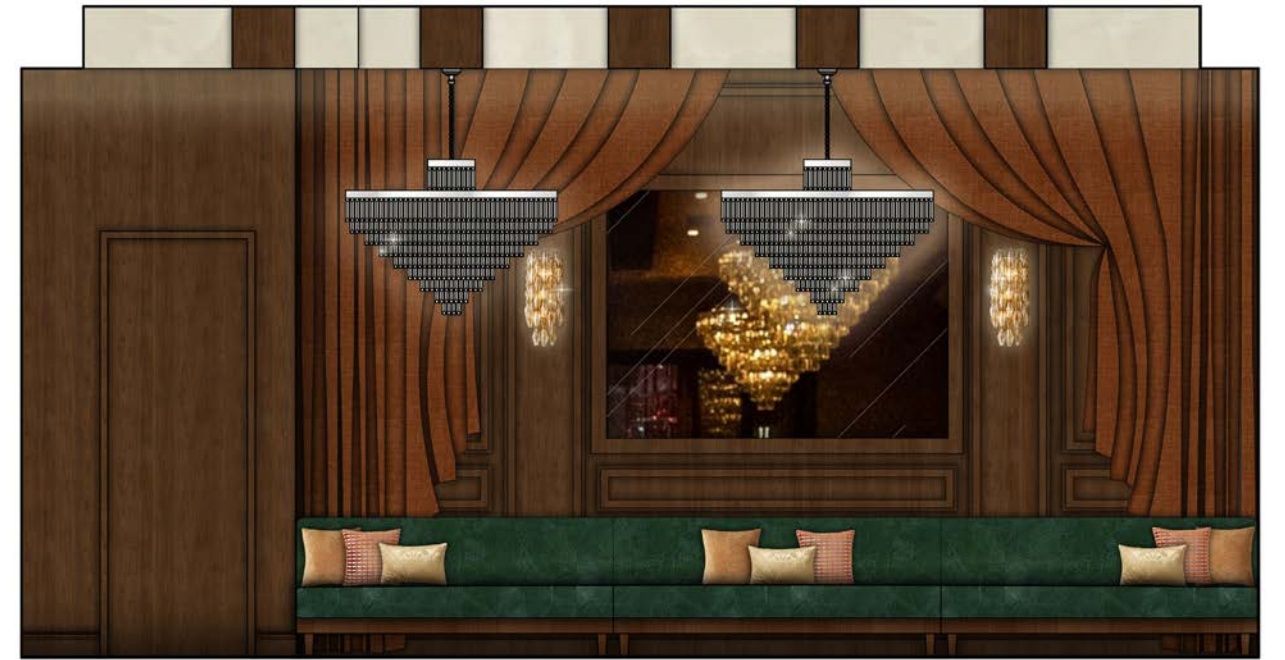
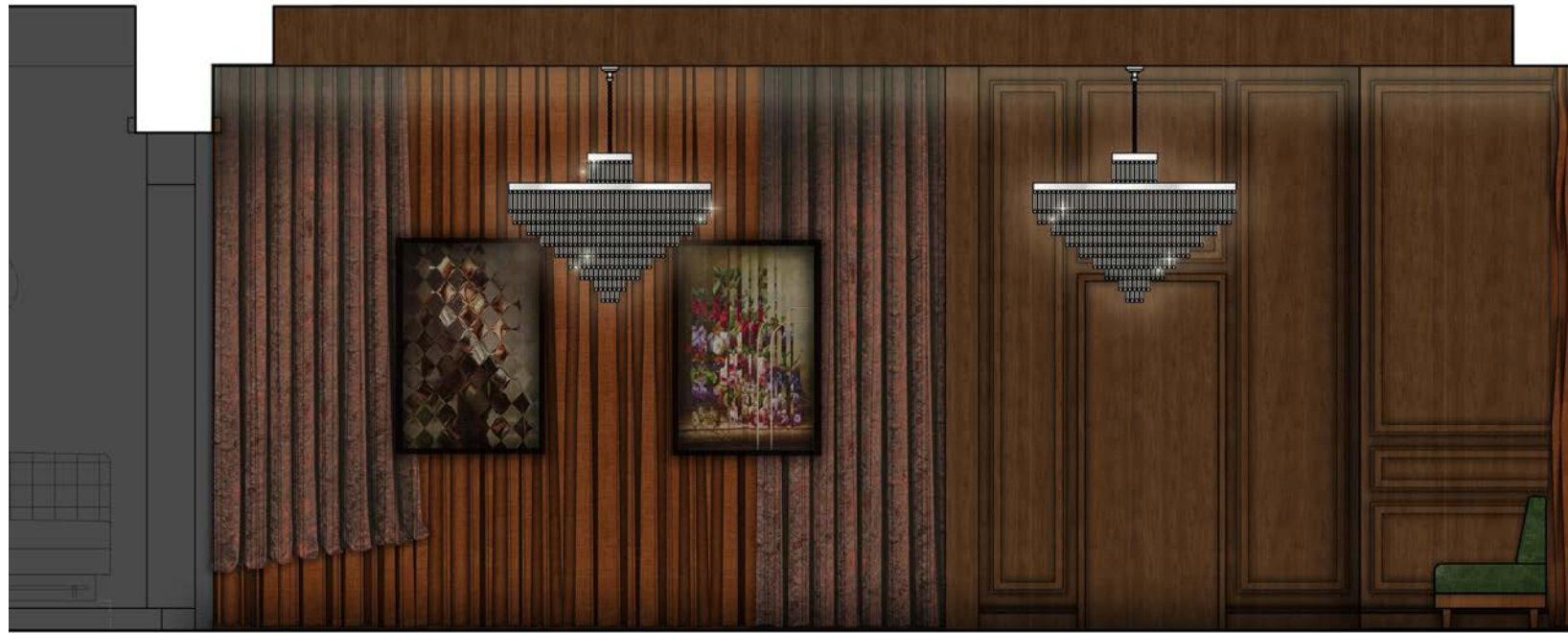
FLOOR PLAN

LAYOUT



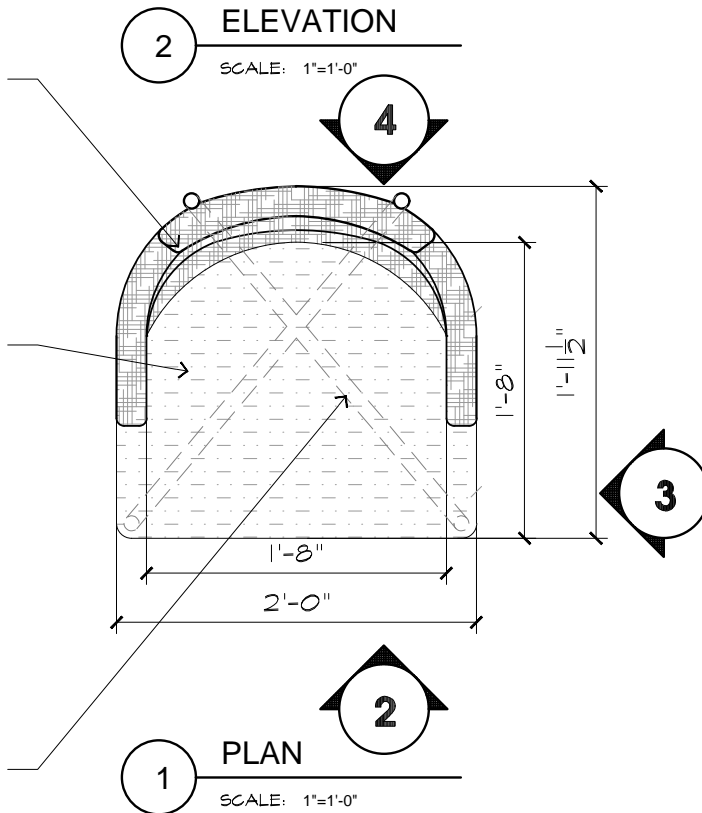
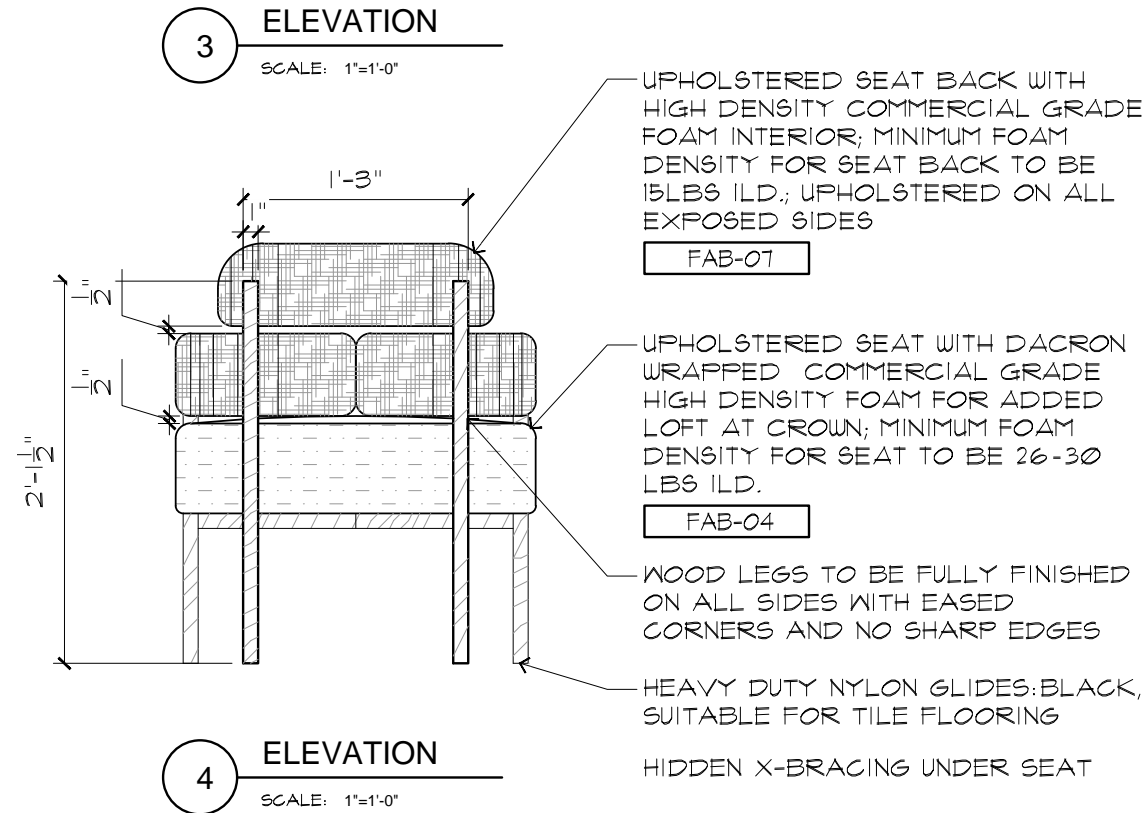
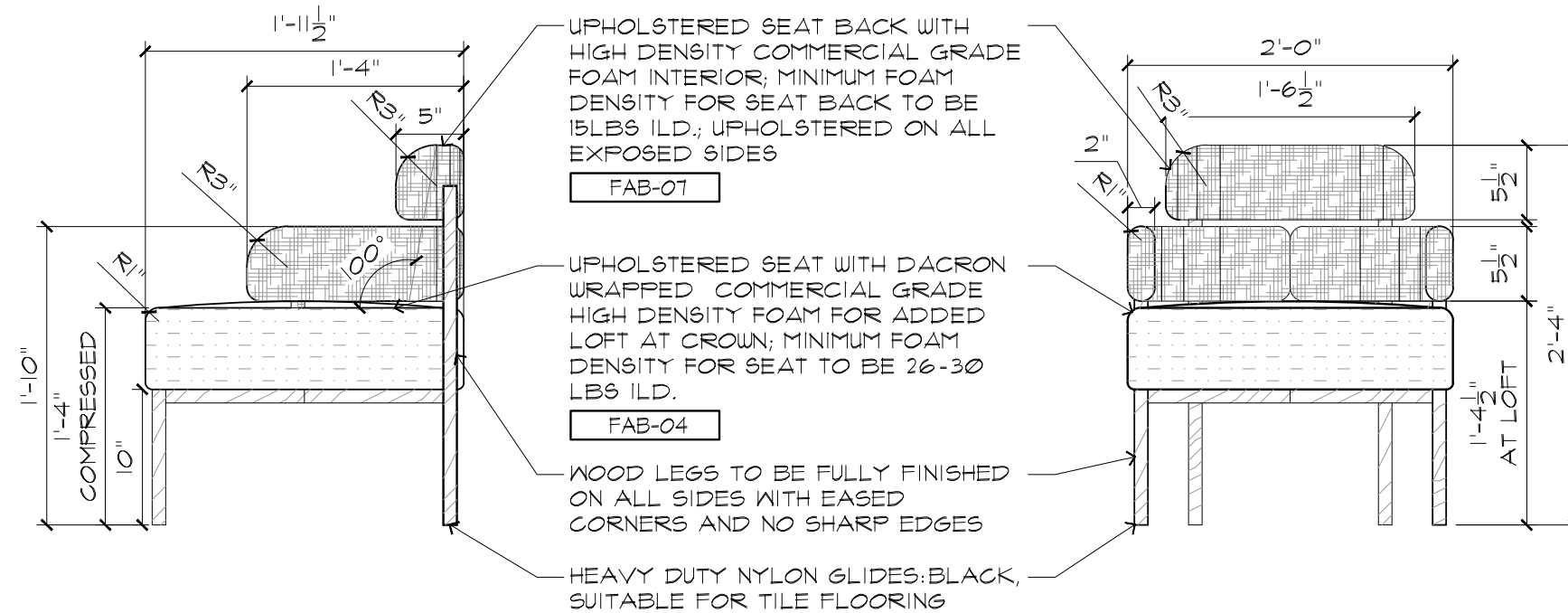
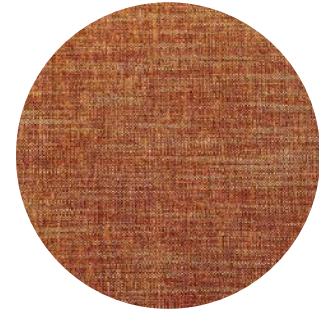
RENDERINGS

PRIVATE DINING



CUSTOM FURNITURE

CONTINENTAL DINING CHAIR



HEARTHSTONE KITCHEN & CELLAR

HOSPITALITY - RESTAURANT
LAS VEGAS, NEVADA
2025



CONCEPT

MOOD BOARD

Tucked within the Red Rock Resort in Las Vegas, Hearthstone was conceived as more than a dining destination. It was designed as an experience of warmth, comfort, and connection. The concept draws inspiration from the idea of home, where good food and shared moments naturally bring people together. Modern sensibility meets rustic character through a palette of teal, sand, and rich walnut wood, while mismatched seating, textured fabrics, and layered details add a lived-in authenticity that feels welcoming and familiar.

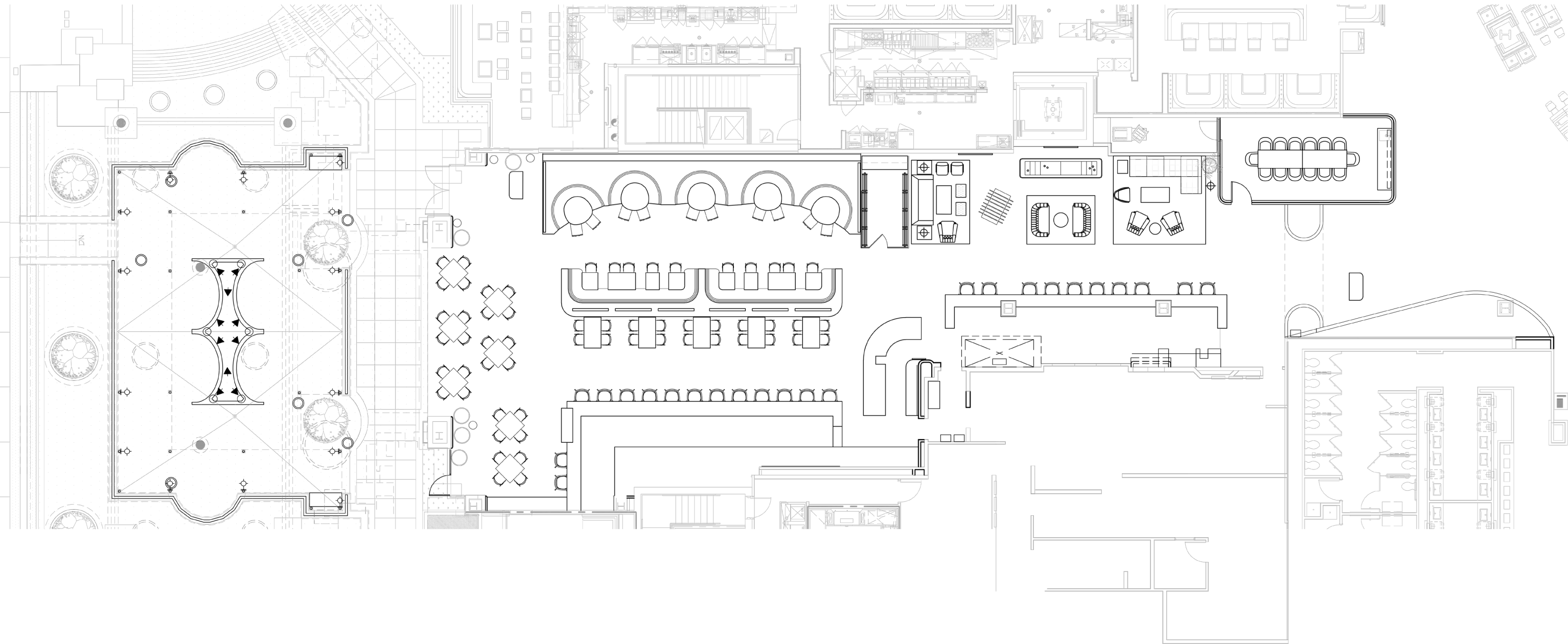
The spatial composition encourages flow and interaction, guiding guests from the lively bar to the intimate dining areas and onward to a relaxed game lounge. Each space maintains its own personality yet contributes to a cohesive narrative of comfort and ease. Behind the bar, craftsmanship and creativity are reflected in every detail, while the adjoining wine room and lounge invite guests to unwind, play vintage board games, and enjoy the hum of music in an atmosphere that feels timeless and personal.

At its core, Hearthstone embodies a design ethos rooted in hospitality and connection. It is a place where materials, lighting, and spatial gestures work in harmony to foster meaningful experiences, whether over brunch, dinner, or celebration. The design celebrates the beauty of gathering, transforming everyday moments into lasting memories and creating an environment that is as heartfelt as it is refined.



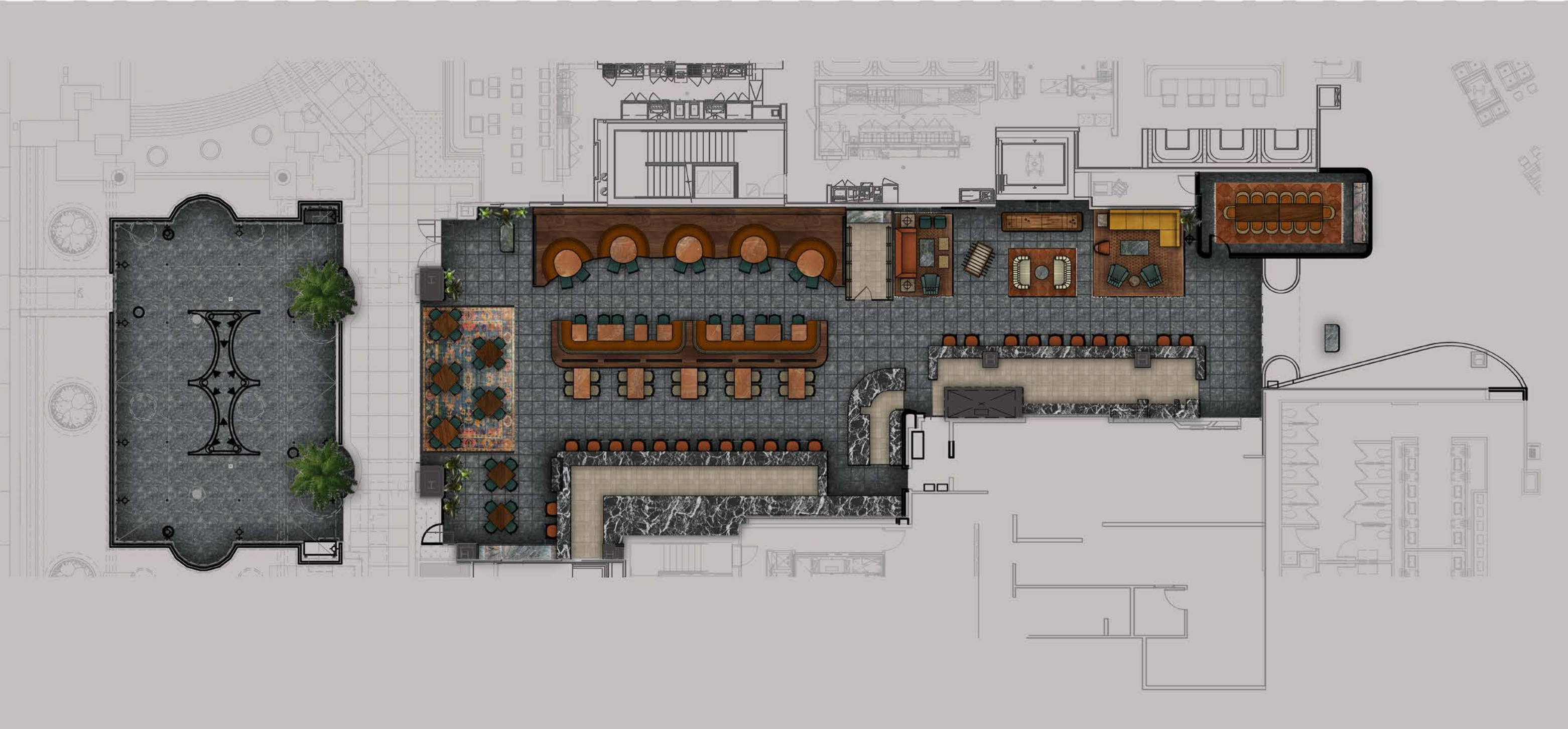
FLOOR PLAN

LAYOUT



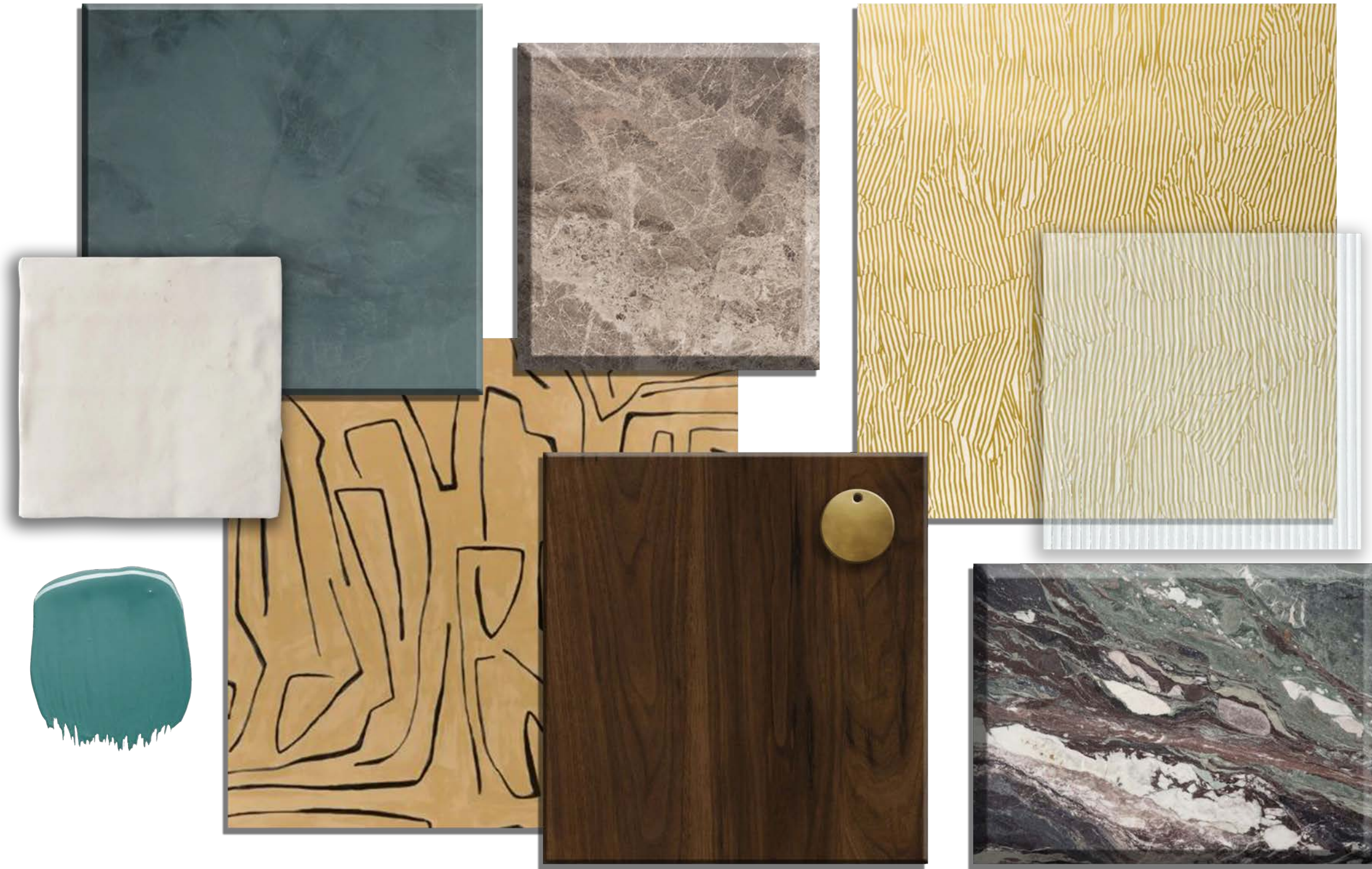
RENDERINGS

FURNITURE PLAN



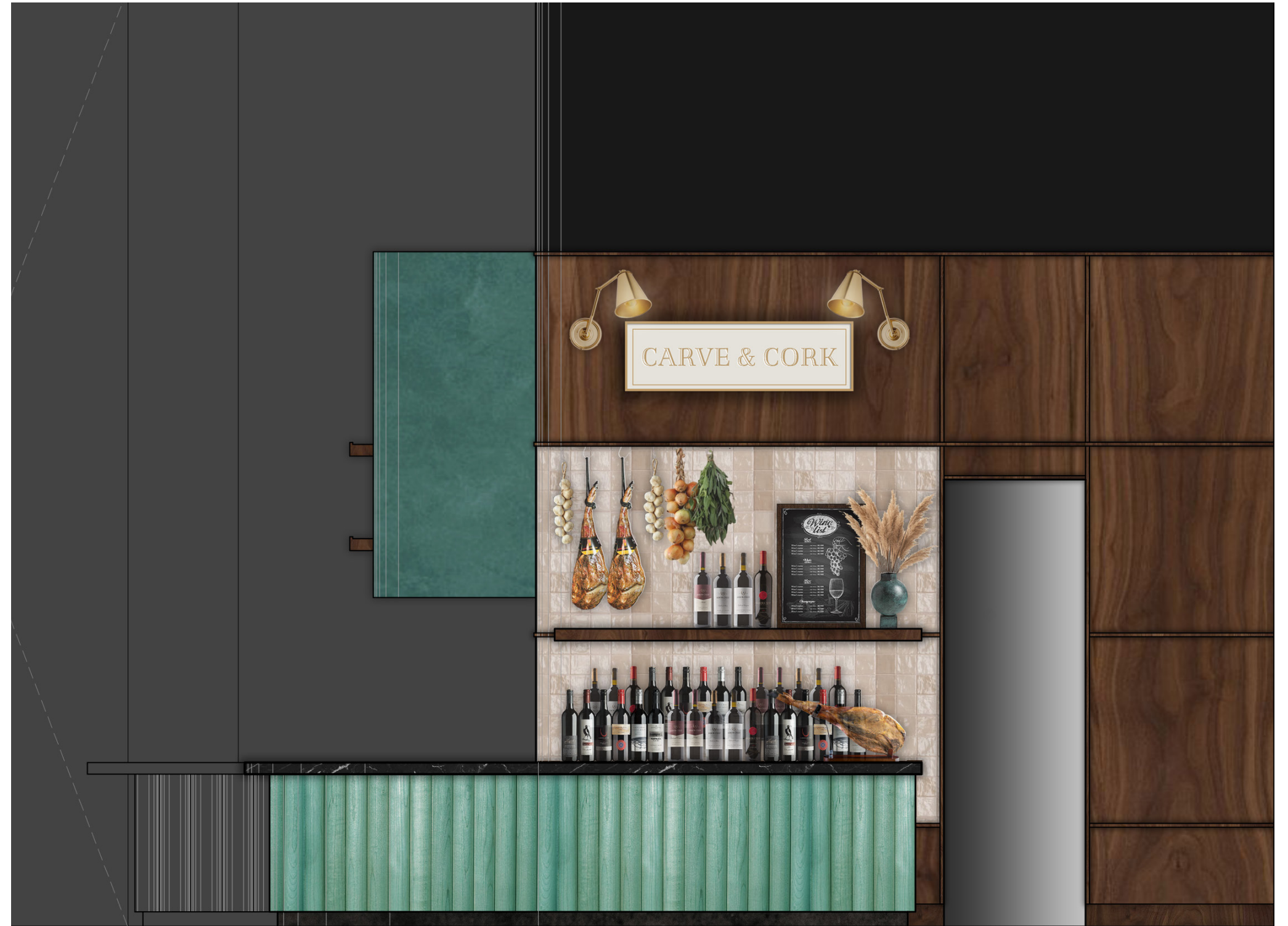
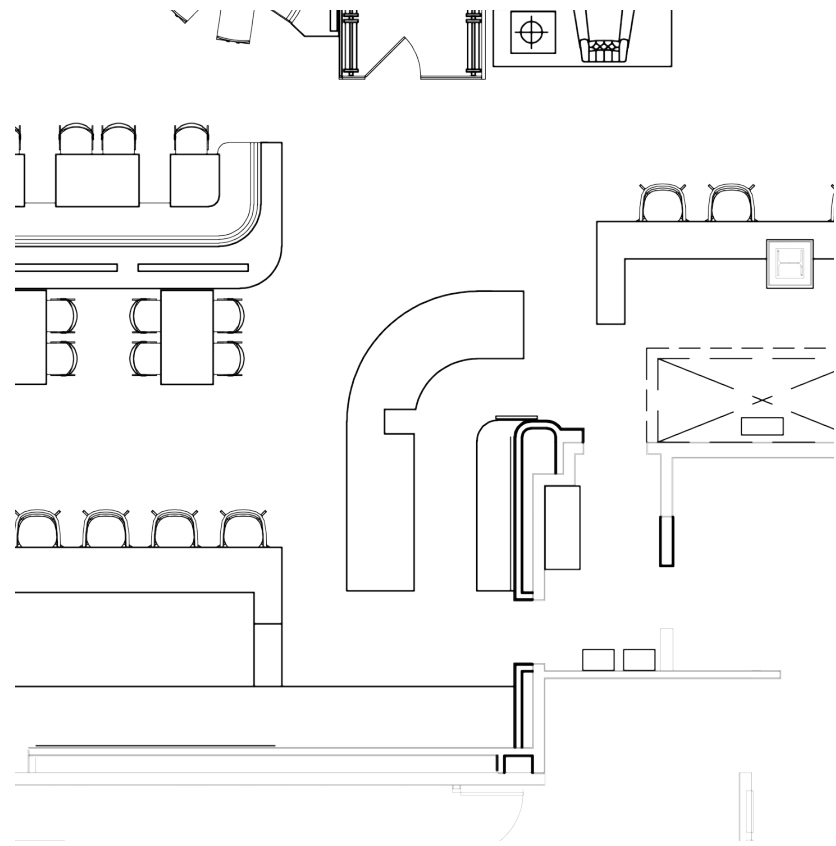
MATERIALS

ARCHITECTURAL FINISHES



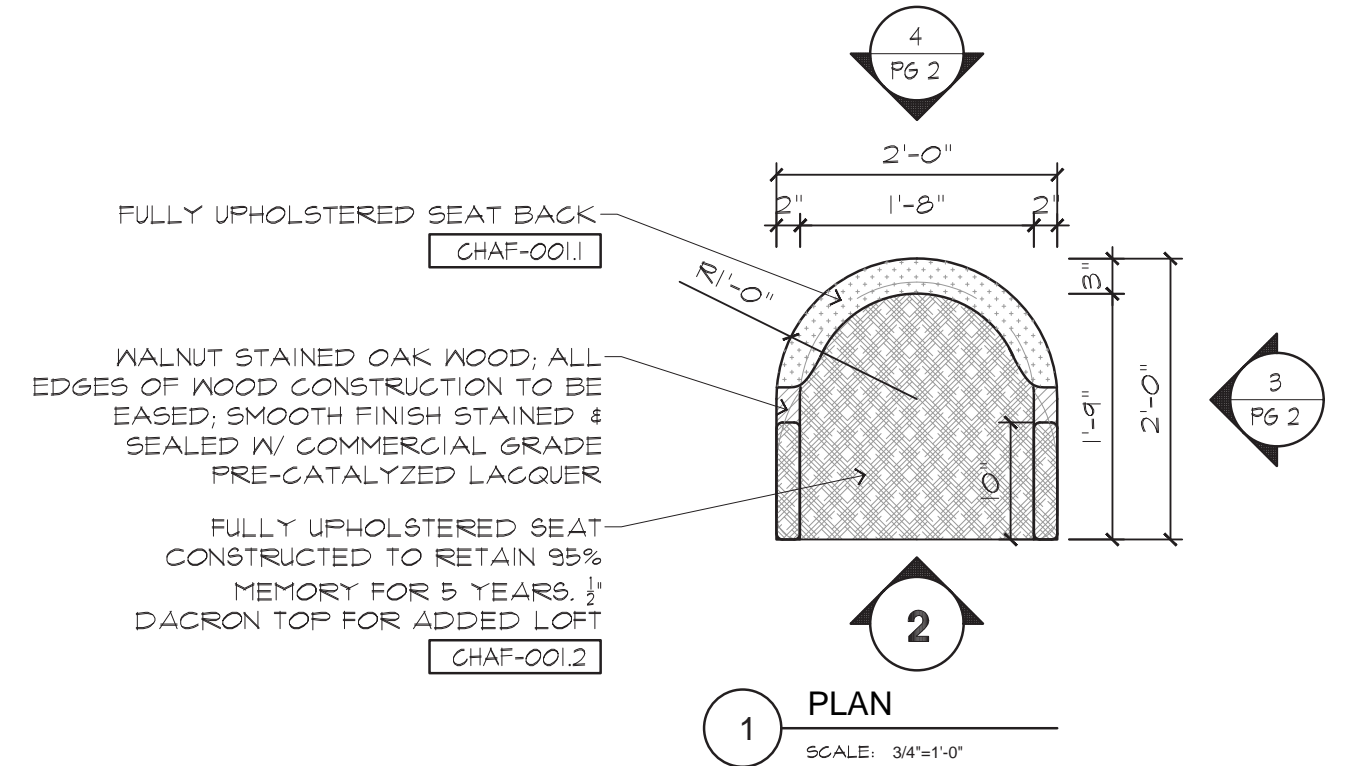
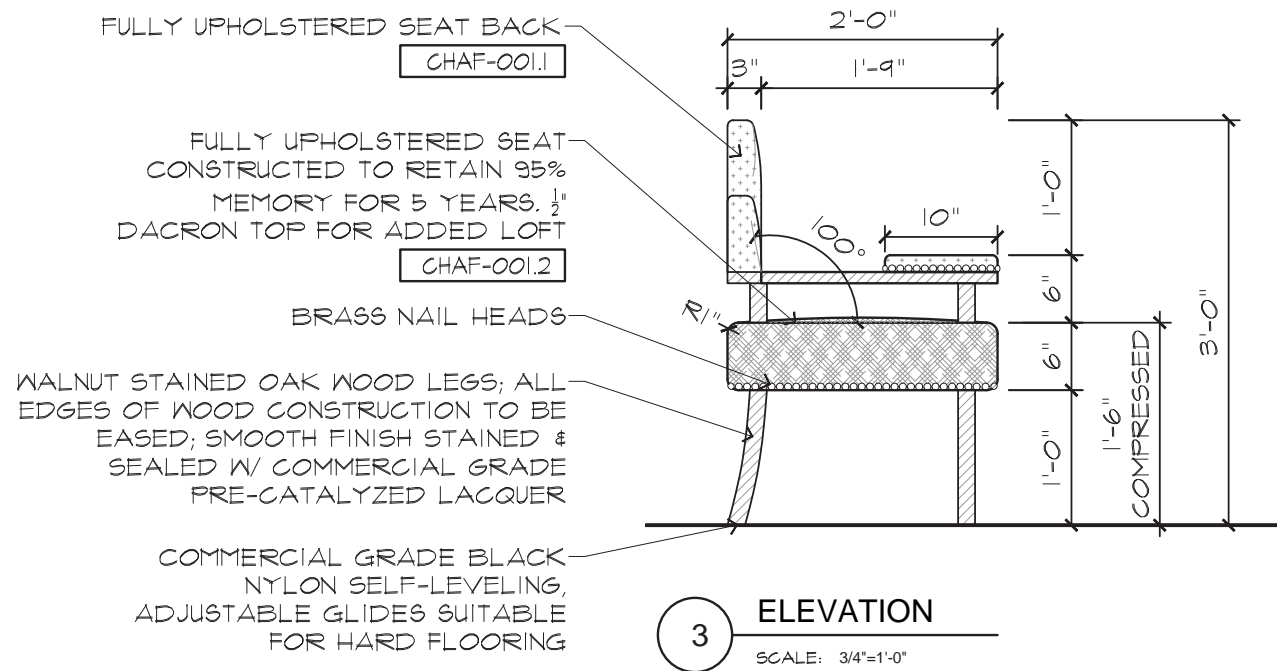
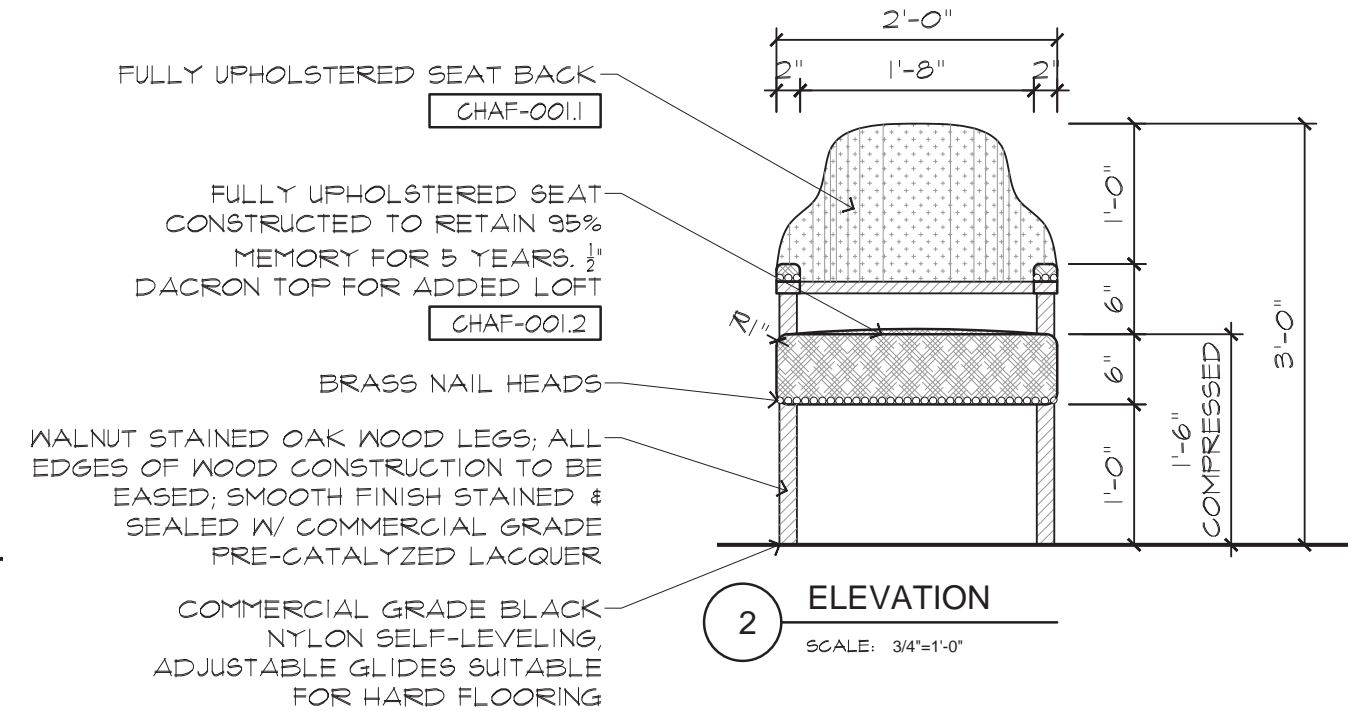
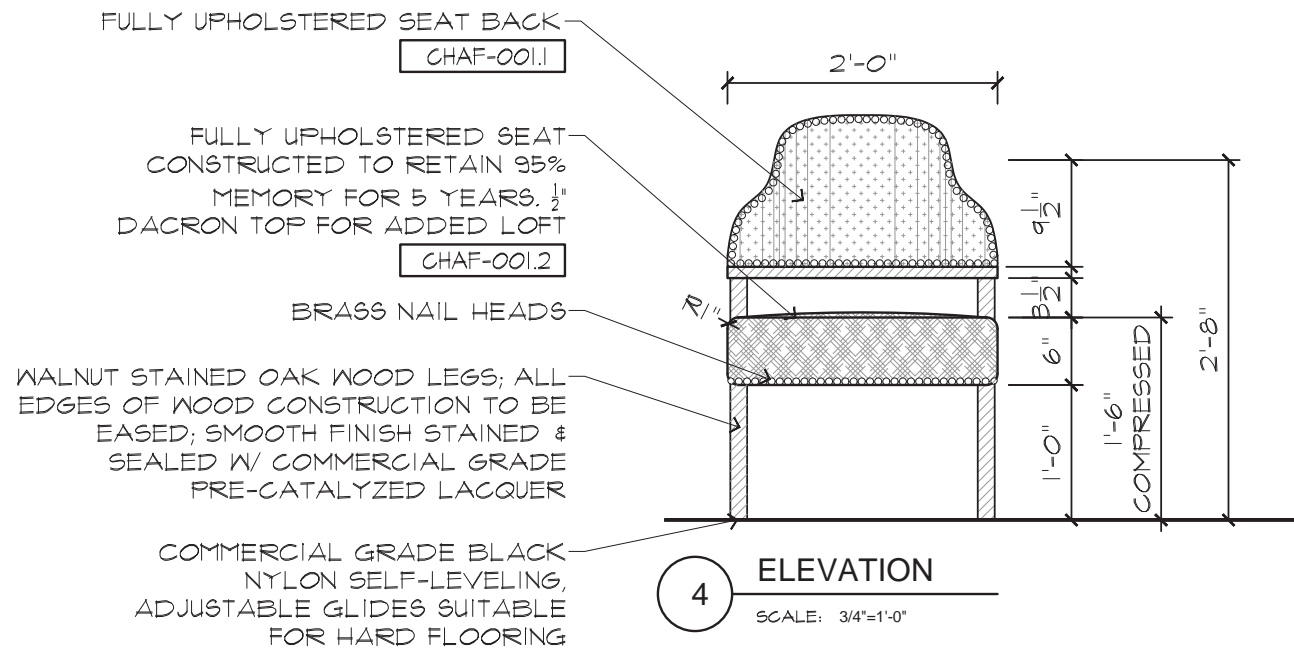
RENDERINGS

CARVE & CORK



CUSTOM FURNITURE

DINING CHAIR



MESA DIOSA

HOSPITALITY - RESTAURANT

GLENDALE, ARIZONA

2026



CONCEPT

MOOD BOARD

Mesa Diosa is a captivating escape where the mystique of ancient Mayan culture meets the effortless sophistication of modern Mexico. Nestled within the vibrant energy of Vai Resort, the restaurant draws inspiration from the coastal spirit of Tulum, sun-washed, soulful, and deeply connected to nature. Organic materials, handcrafted artistry, and layered textures create an immersive environment that feels both timeless and contemporary, inviting guests into a destination where heritage, hospitality, and celebration converge.

By day, natural light fills the space, illuminating earthy finishes, lush greenery, and artisan-crafted elements that create a relaxed atmosphere reminiscent of a luxurious beachside retreat. The energy is warm, welcoming, and effortlessly elegant.

As the sun sets, Mesa Diosa reveals its more seductive side. The restaurant transitions into a dynamic nightlife destination, an intimate sanctuary inspired by Mexico's untamed spirit. Deep earthy tones, carved motifs, rich textures, and dramatic lighting create a moody, alluring environment where mystery and excitement linger in every corner. Pulsing music, handcrafted cocktails, live entertainment, and spontaneous moments of connection transform the venue into an unforgettable social experience, one that celebrates the rhythm, beauty, and vibrant soul of modern Mexico long into the night.



FLOOR PLAN

LAYOUT



MATERIALS

ARCHITECTURAL FINISHES



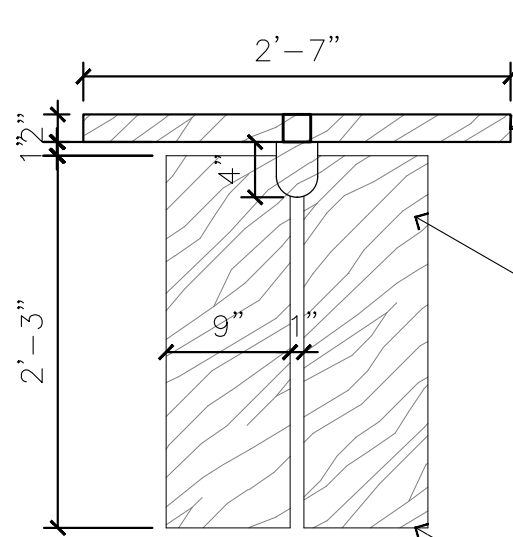
FURNITURE

SELECTIONS



CUSTOM FURNITURE

DINING TABLE

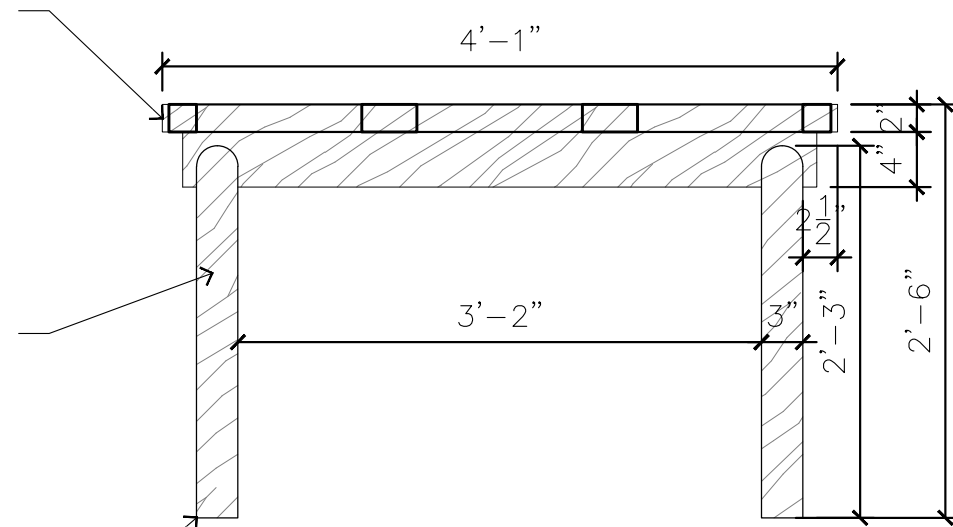


3 ELEVATION
SCALE: 3/4"=1'-0"

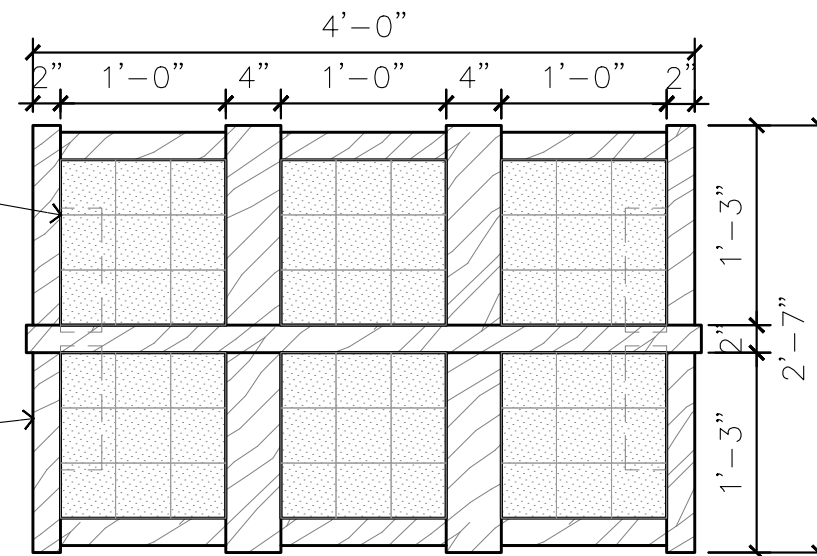
TEAK TABLE TOP WITH INSET PORCELAIN TILE; TILE TO BE SET FLUSH WITH WOOD SURFACE; PROVIDE SEALED, NON-POROUS GROUT; ALL SURFACES TO BE SMOOTH, SEALED, AND EASILY CLEANABLE

TEAK WOOD TABLE BASE; PROVIDE REINFORCED JOINERY AND STRUCTURAL SUPPORT FOR STABILITY

COMMERCIAL GRADE BLACK NYLON SELF-LEVELING, ADJUSTABLE GLIDES SUITABLE FOR HARD FLOORING



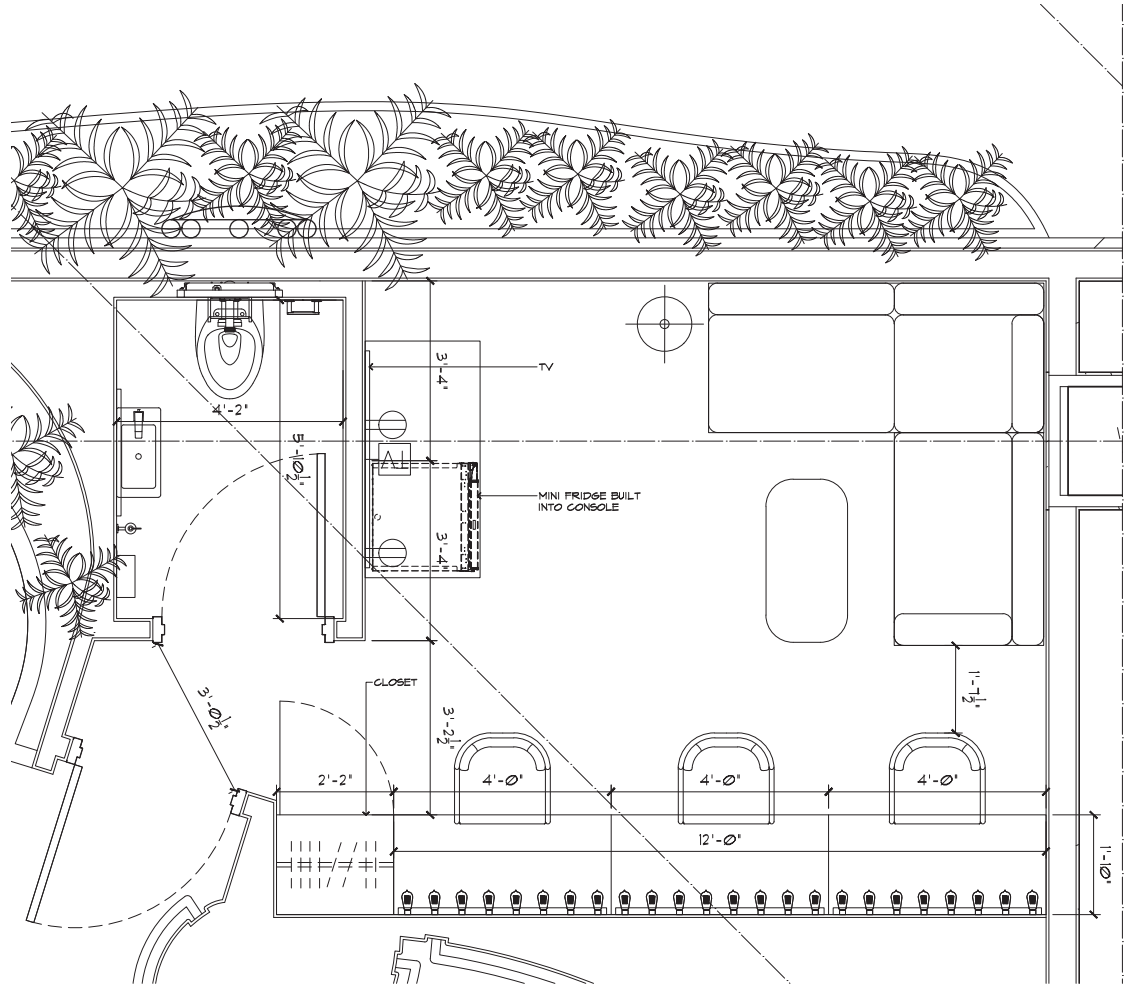
2 ELEVATION
SCALE: 3/4"=1'-0"



1 PLAN
SCALE: 3/4"=1'-0"

TEAK TABLE TOP WITH INSET PORCELAIN TILE; TILE TO BE SET FLUSH WITH WOOD SURFACE; PROVIDE SEALED, NON-POROUS GROUT; ALL SURFACES TO BE SMOOTH, SEALED, AND EASILY CLEANABLE

GREEN ROOM FUNRITURE SELECTIONS



ELIZABETH KLEIN

MESA DIOSA

ELIZABETH KLEIN
INTERIOR DESIGNER

ENKLEIN98@GMAIL.COM
(952)607-8977